

Anti-IL-1RAP / IL-1R3 Reference Antibody (Nadunolimab)

Recombinant Antibody

Catalog # APR10418

Product Information

Application	FC, Kinetics, Animal Model
Primary Accession	Q9NPH3
Reactivity	Human, Mouse
Clonality	Monoclonal
Isotype	IgG1
Calculated MW	65418

Additional Information

Target/Specificity	IL-1RAP / IL-1R3
Endotoxin	
Conjugation	Unconjugated
Expression system	CHO Cell
Format	Purified monoclonal antibody supplied in PBS, pH6.0, without preservative. This antibody is purified through a protein A column.

Protein Information

Name	IL1RAP
Synonyms	C3orf13, IL1R3
Function	<p>Coreceptor for IL1RL2 in the IL-36 signaling system (By similarity). Coreceptor with IL1R1 in the IL-1 signaling system. Associates with IL1R1 bound to IL1B to form the high affinity interleukin-1 receptor complex which mediates interleukin-1-dependent activation of NF-kappa-B and other pathways. Signaling involves the recruitment of adapter molecules such as TOLLIP, MYD88, and IRAK1 or IRAK2 via the respective TIR domains of the receptor/coreceptor subunits. Recruits TOLLIP to the signaling complex. Does not bind to interleukin-1 alone; binding of IL1RN to IL1R1, prevents its association with IL1R1 to form a signaling complex. The cellular response is modulated through a non-signaling association with the membrane IL1R2 decoy receptor. Coreceptor for IL1RL1 in the IL-33 signaling system. Can bidirectionally induce pre- and postsynaptic differentiation of neurons by trans-synaptically binding to PTPRD (By similarity). May play a role in IL1B-mediated costimulation of IFNG production from T-helper 1 (Th1) cells (Probable).</p>

[Isoform 1]: Cell membrane; Single-pass type I membrane protein [Isoform 3]:

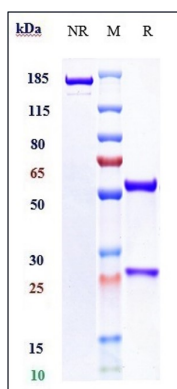
Cellular Location

Secreted.

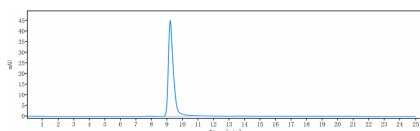
Tissue Location

Detected in liver, skin, placenta, thymus and lung. Isoform 4 is predominantly expressed in brain. Overexpressed on candidate chronic myeloid leukemia (CML) stem cells, hematopoietic stem cells and mononuclear cells of patients with acute myeloid leukemia (AML). Overexpressed in patients with chronic obstructive pulmonary disease (COPD). Expressed in T-helper 1 (Th1) and T-helper 2 (Th2) cell subsets (PubMed:10653850).

Images



Anti-IL-1RAP / IL-1R3 Reference Antibody (Nadunolimab) on SDS-PAGE under reducing (R) condition. The gel was stained with Coomassie Blue. The purity of the protein is greater than 95%



The purity of Anti-IL-1RAP / IL-1R3 Reference Antibody (Nadunolimab) is more than 100% ,determined by SEC-HPLC.

Please note: All products are 'FOR RESEARCH USE ONLY. NOT FOR USE IN DIAGNOSTIC OR THERAPEUTIC PROCEDURES'.