

Anti-oxLDL Reference Antibody (orticumab)

Recombinant Antibody

Catalog # APR10436

Product Information

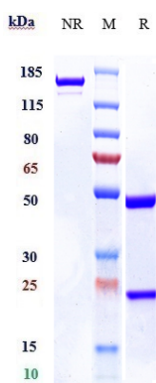
Application	FC, Kinetics, Animal Model
Primary Accession	NA
Reactivity	Human, Mouse
Clonality	Monoclonal
Isotype	IgG1
Calculated MW	145 KDa

Additional Information

Target/Specificity	oxLDL
Endotoxin	
Conjugation	Unconjugated
Expression system	CHO Cell
Format	Purified monoclonal antibody supplied in PBS, pH6.0, without preservative. This antibody is purified through a protein A column.

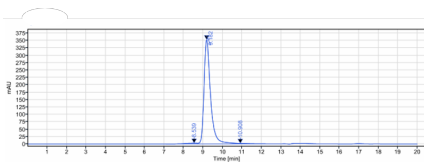
Protein Information

Images



Anti-oxLDL Reference Antibody (orticumab) on SDS-PAGE under reducing (R) condition. The gel was stained with Coomassie Blue. The purity of the protein is greater than 90%

The purity of Anti-oxLDL Reference Antibody (orticumab) is more than 97.79%, determined by SEC-HPLC.



Please note: All products are 'FOR RESEARCH USE ONLY. NOT FOR USE IN DIAGNOSTIC OR THERAPEUTIC PROCEDURES'.