

Anti-IL-13Ra1 / CD213a1 Reference Antibody (MK-6105)

Recombinant Antibody

Catalog # APR10437

Product Information

| | |
|--------------------------|----------------------------|
| Application | FC, Kinetics, Animal Model |
| Primary Accession | P78552 |
| Reactivity | Human |
| Clonality | Monoclonal |
| Isotype | IgG2SA |
| Calculated MW | 48760 |

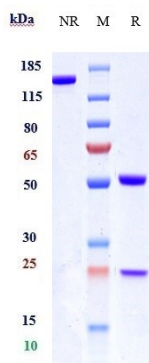
Additional Information

| | |
|---------------------------|----------------------------------------------------------------------------------------------------------------------------------|
| Target/Specificity | IL-13Ra1 / CD213a1 |
| Endotoxin | |
| Conjugation | Unconjugated |
| Expression system | CHO Cell |
| Format | Purified monoclonal antibody supplied in PBS, pH6.0, without preservative. This antibody is purified through a protein A column. |

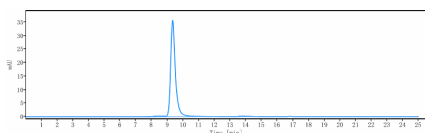
Protein Information

| | |
|--------------------------|-------------------------------------------------------------------------------------------------------------------------------------------------------------------------------------------------------------------------------------------------------------------------------------------------------------------------------------------------|
| Name | IL13RA1 |
| Synonyms | IL13R, IL13RA |
| Function | Binds with low affinity to interleukin-13 (IL13). Together with IL4RA can form a functional receptor for IL13. Also serves as an alternate accessory protein to the common cytokine receptor gamma chain for interleukin-4 (IL4) signaling, but cannot replace the function of IL2RG in allowing enhanced interleukin-2 (IL2) binding activity. |
| Cellular Location | Membrane; Single-pass type I membrane protein. |
| Tissue Location | Ubiquitous. Highest levels in heart, liver, skeletal muscle and ovary; lowest levels in brain, lung and kidney Also found in B-cells, T-cells and endothelial cells |

Images



Anti-IL-13Ra1 / CD213a1 Reference Antibody (MK-6105) on SDS-PAGE under reducing (R) condition. The gel was stained with Coomassie Blue. The purity of the protein is greater than 95%



The purity of Anti-IL-13Ra1 / CD213a1 Reference Antibody (MK-6105) is more than 100% ,determined by SEC-HPLC.

Please note: All products are 'FOR RESEARCH USE ONLY. NOT FOR USE IN DIAGNOSTIC OR THERAPEUTIC PROCEDURES'.