

Anti-Lewis Y Reference Antibody (MB 311)

Recombinant Antibody
Catalog # APR10446

Product Information

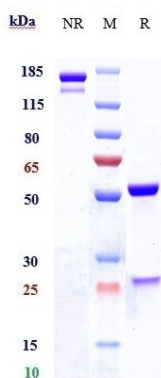
Application	FC, Kinetics, Animal Model
Primary Accession	NA
Reactivity	Human
Clonality	Monoclonal
Isotype	IgG1
Calculated MW	150 KDa

Additional Information

Target/Specificity	Lewis Y
Endotoxin	
Conjugation	Unconjugated
Expression system	CHO Cell
Format	Purified monoclonal antibody supplied in PBS, pH6.0, without preservative. This antibody is purified through a protein A column.

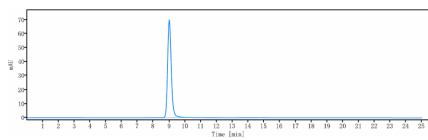
Protein Information

Images



Anti-Lewis Y Reference Antibody (MB 311) on SDS-PAGE under reducing (R) condition. The gel was stained with Coomassie Blue. The purity of the protein is greater than 90%

The purity of Anti-Lewis Y Reference Antibody (MB 311) is more than 95%, determined by SEC-HPLC.



Please note: All products are 'FOR RESEARCH USE ONLY. NOT FOR USE IN DIAGNOSTIC OR THERAPEUTIC PROCEDURES'.