

Anti-IL-15 Reference Antibody (ordesekimab)

Recombinant Antibody
Catalog # APR10453

Product Information

Application	FC, Kinetics, Animal Model
Primary Accession	P40933
Reactivity	Human
Clonality	Monoclonal
Isotype	IgG1
Calculated MW	18086

Additional Information

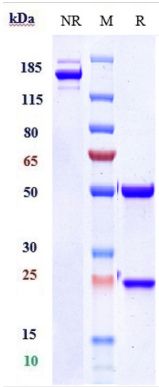
Target/Specificity	IL-15
Endotoxin Conjugation	Unconjugated
Expression system	CHO Cell
Format	Purified monoclonal antibody supplied in PBS, pH6.0, without preservative. This antibody is purified through a protein A column.

Protein Information

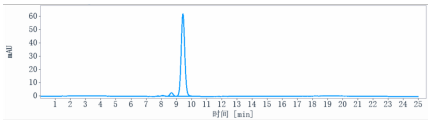
Name	IL15
Function	Cytokine that plays a major role in the development of inflammatory and protective immune responses to microbial invaders and parasites by modulating immune cells of both the innate and adaptive immune systems (PubMed: 15123770). Stimulates the proliferation of natural killer cells, T-cells and B-cells and promotes the secretion of several cytokines (PubMed: 8178155 , PubMed: 9326248). In monocytes, induces the production of IL8 and monocyte chemotactic protein 1/CCL2, two chemokines that attract neutrophils and monocytes respectively to sites of infection (PubMed: 9326248). Unlike most cytokines, which are secreted in soluble form, IL15 is expressed in association with its high affinity IL15RA on the surface of IL15-producing cells and delivers signals to target cells that express IL2RB and IL2RG receptor subunits (PubMed: 10233906 , PubMed: 23104097 , PubMed: 8026467). Binding to its receptor triggers the phosphorylation of JAK1 and JAK3 and the recruitment and subsequent phosphorylation of signal transducer and activator of transcription-3/STAT3 and STAT5 (PubMed: 7568001). In mast cells, induces the rapid tyrosine phosphorylation of STAT6 and thereby controls mast cell survival and release of cytokines such as IL4 (By similarity).

Cellular Location	[Isoform IL15-S48AA]: Secreted.
Tissue Location	Most abundant in placenta and skeletal muscle. It is also detected in the heart, lung, liver and kidney. IL15-S21AA is preferentially expressed in tissues such as testis and thymus

Images



Anti-IL-15 Reference Antibody (ordesekimab) on SDS-PAGE under reducing (R) condition. The gel was stained with Coomassie Blue. The purity of the protein is greater than 95%



The purity of Anti-IL-15 Reference Antibody (ordesekimab)is more than 95.77% ,determined by SEC-HPLC.

Please note: All products are 'FOR RESEARCH USE ONLY. NOT FOR USE IN DIAGNOSTIC OR THERAPEUTIC PROCEDURES'.