

# Anti-IL-33 Reference Antibody (torudokimab)

Recombinant Antibody  
Catalog # APR10455

## Product Information

---

Application	FC, Kinetics, Animal Model
Primary Accession	<a href="#">O95760</a>
Reactivity	Human
Clonality	Monoclonal
Isotype	IgG4SP
Calculated MW	30759

## Additional Information

---

Target/Specificity	IL-33
Endotoxin Conjugation	Unconjugated
Expression system	CHO Cell
Format	Purified monoclonal antibody supplied in PBS, pH6.0, without preservative. This antibody is purified through a protein A column.

## Protein Information

---

Name	IL33 ( <a href="#">HGNC:16028</a> )
Synonyms	C9orf26, IL1F11, NFHEV
Function	<p>Cytokine that binds to and signals through the IL1RL1/ST2 receptor which in turn activates NF-kappa-B and MAPK signaling pathways in target cells (PubMed:<a href="#">16286016</a>, PubMed:<a href="#">19841166</a>). Involved in the maturation of Th2 cells inducing the secretion of T-helper type 2- associated cytokines (PubMed:<a href="#">17853410</a>, PubMed:<a href="#">18836528</a>). Also involved in activation of mast cells, basophils, eosinophils and natural killer cells (PubMed:<a href="#">17853410</a>, PubMed:<a href="#">18836528</a>). Acts as an enhancer of polarization of alternatively activated macrophages (PubMed:<a href="#">19841166</a>). Acts as a chemoattractant for Th2 cells, and may function as an 'alarmin', that amplifies immune responses during tissue injury (PubMed:<a href="#">17853410</a>, PubMed:<a href="#">18836528</a>). Induces rapid UCP2-dependent mitochondrial rewiring that attenuates the generation of reactive oxygen species and preserves the integrity of Krebs cycle required for persistent production of itaconate and subsequent GATA3-dependent differentiation of inflammation-resolving alternatively activated macrophages (By similarity).</p> <p>Nucleus. Chromosome. Cytoplasm Cytoplasmic vesicle, secretory vesicle</p>

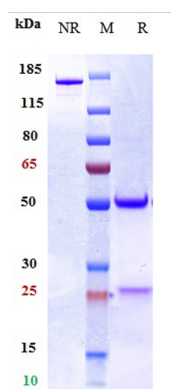
## Cellular Location

Secreted Note=Secreted and released in the extracellular milieu by passing through the gasdermin-D (GSDMD) pore following cleavage by CELA1 (PubMed:35794369). Associates with heterochromatin and mitotic chromosomes (PubMed:17185418). The secretion is dependent on protein unfolding and facilitated by the cargo receptor TMED10; it results in protein translocation from the cytoplasm into the ERGIC (endoplasmic reticulum-Golgi intermediate compartment) followed by vesicle entry and secretion (PubMed:32272059).

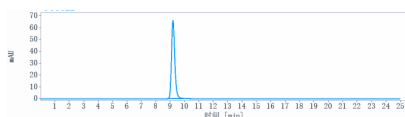
## Tissue Location

Expressed at high level in high endothelial venules found in tonsils, Peyer patches and mesenteric lymph nodes. Almost undetectable in placenta.

## Images



Anti-IL-33 Reference Antibody (torudokimab) on SDS-PAGE under reducing (R) condition. The gel was stained with Coomassie Blue. The purity of the protein is greater than 95%



The purity of Anti-IL-33 Reference Antibody (torudokimab) is more than 95% ,determined by SEC-HPLC.

Please note: All products are 'FOR RESEARCH USE ONLY. NOT FOR USE IN DIAGNOSTIC OR THERAPEUTIC PROCEDURES'.