

# Anti-B7-H1 / PD-L1 / CD274 Reference Antibody (Lesabelimab)

Recombinant Antibody  
Catalog # APR10477

## Product Information

Application	FC, Kinetics, Animal Model
Primary Accession	<a href="#">Q9NZQ7</a>
Reactivity	Human
Clonality	Monoclonal
Isotype	IgG1
Calculated MW	33275

## Additional Information

Target/Specificity	B7-H1 / PD-L1 / CD274
Endotoxin Conjugation	Unconjugated
Expression system	CHO Cell
Format	Purified monoclonal antibody supplied in PBS, pH6.0, without preservative. This antibody is purified through a protein A column.

## Protein Information

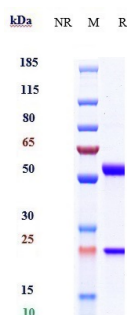
Name	CD274 ( <a href="#">HGNC:17635</a> )
Function	Plays a critical role in induction and maintenance of immune tolerance to self (PubMed: <a href="#">11015443</a> , PubMed: <a href="#">28813410</a> , PubMed: <a href="#">28813417</a> , PubMed: <a href="#">31399419</a> ). As a ligand for the inhibitory receptor PDCD1/PD-1, modulates the activation threshold of T-cells and limits T-cell effector response (PubMed: <a href="#">11015443</a> , PubMed: <a href="#">28813410</a> , PubMed: <a href="#">28813417</a> , PubMed: <a href="#">36727298</a> ). Through a yet unknown activating receptor, may costimulate T-cell subsets that predominantly produce interleukin-10 (IL10) (PubMed: <a href="#">10581077</a> ). Can also act as a transcription coactivator: in response to hypoxia, translocates into the nucleus via its interaction with phosphorylated STAT3 and promotes transcription of GSDMC, leading to pyroptosis (PubMed: <a href="#">32929201</a> ).
Cellular Location	Cell membrane; Single-pass type I membrane protein. Early endosome membrane; Single-pass type I membrane protein. Recycling endosome membrane; Single-pass type I membrane protein. Nucleus. Note=Associates with CMTM6 at recycling endosomes, where it is protected from being targeted for lysosomal degradation (PubMed:28813417). Translocates to the

nucleus in response to hypoxia via its interaction with phosphorylated STAT3 (PubMed:32929201). [Isoform 2]: Endomembrane system; Single-pass type I membrane protein

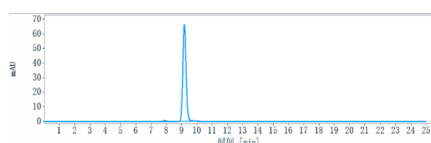
## Tissue Location

Highly expressed in the heart, skeletal muscle, placenta and lung. Weakly expressed in the thymus, spleen, kidney and liver. Expressed on activated T- and B-cells, dendritic cells, keratinocytes and monocytes.

## Images



Anti-B7-H1 / PD-L1 / CD274 Reference Antibody (Lesabelimab) on SDS-PAGE under reducing (R) condition. The gel was stained with Coomassie Blue. The purity of the protein is greater than 90%



The purity of Anti-B7-H1 / PD-L1 / CD274 Reference Antibody (Lesabelimab) is more than 95% ,determined by SEC-HPLC.

Please note: All products are 'FOR RESEARCH USE ONLY. NOT FOR USE IN DIAGNOSTIC OR THERAPEUTIC PROCEDURES'.