

Anti-KIR Reference Antibody (lirilumab)

Recombinant Antibody
Catalog # APR10496

Product Information

Application	FC, Kinetics, Animal Model
Primary Accession	P55040
Reactivity	Human, Mouse
Clonality	Monoclonal
Isotype	IgG4
Calculated MW	33949

Additional Information

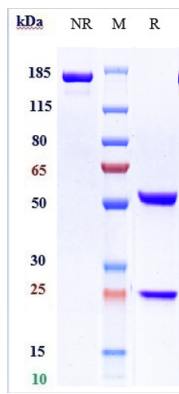
Target/Specificity	KIR
Endotoxin Conjugation	Unconjugated
Expression system	CHO Cell
Format	Purified monoclonal antibody supplied in PBS, pH6.0, without preservative. This antibody is purified through a protein A column.

Protein Information

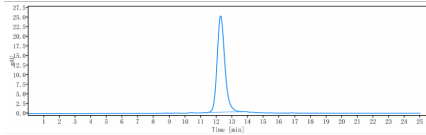
Name	GEM
Synonyms	KIR
Function	Could be a regulatory protein, possibly participating in receptor-mediated signal transduction at the plasma membrane. Has guanine nucleotide-binding activity but undetectable intrinsic GTPase activity.
Cellular Location	Cell membrane; Peripheral membrane protein; Cytoplasmic side
Tissue Location	Most abundant in thymus, spleen, kidney, lung, and testis. Less abundant in heart, brain, liver and skeletal muscle

Images

Anti-KIR Reference Antibody (lirilumab) on SDS-PAGE under reducing (R) condition. The gel was stained with Coomassie Blue. The purity of the protein is greater than



95%



The purity of Anti-KIR Reference Antibody (lirilumab) is more than 100% ,determined by SEC-HPLC.

Please note: All products are 'FOR RESEARCH USE ONLY. NOT FOR USE IN DIAGNOSTIC OR THERAPEUTIC PROCEDURES'.