

Anti-LAG3 / CD223 Reference Antibody (ieramilimab)

Recombinant Antibody

Catalog # APR10498

Product Information

| | |
|--------------------------|----------------------------|
| Application | FC, Kinetics, Animal Model |
| Primary Accession | P18627 |
| Reactivity | Human |
| Clonality | Monoclonal |
| Isotype | IgG4SP |
| Calculated MW | 57449 |

Additional Information

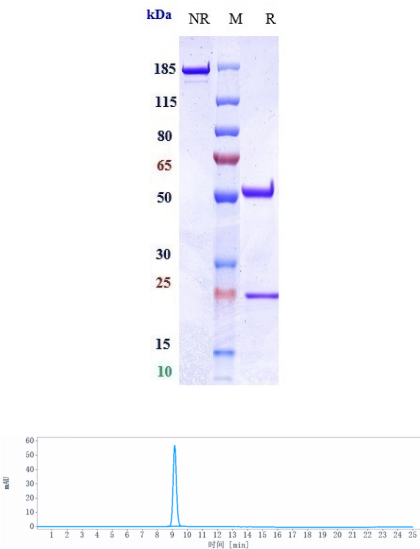
| | |
|---------------------------|--|
| Target/Specificity | LAG3 / CD223 |
| Endotoxin | |
| Conjugation | Unconjugated |
| Expression system | CHO Cell |
| Format | Purified monoclonal antibody supplied in PBS, pH6.0, without preservative. This antibody is purified through a protein A column. |

Protein Information

| | |
|-----------------|---|
| Name | LAG3 (HGNC:6476) |
| Synonyms | FDC |
| Function | Lymphocyte activation gene 3 protein: Inhibitory receptor on antigen activated T-cells (PubMed: 20421648 , PubMed: 7805750 , PubMed: 8647185). Delivers inhibitory signals upon binding to ligands, such as FGL1 (By similarity). FGL1 constitutes a major ligand of LAG3 and is responsible for LAG3 T-cell inhibitory function (By similarity). Following TCR engagement, LAG3 associates with CD3-TCR in the immunological synapse and directly inhibits T-cell activation (By similarity). May inhibit antigen-specific T-cell activation in synergy with PDCD1/PD-1, possibly by acting as a coreceptor for PDCD1/PD-1 (By similarity). Negatively regulates the proliferation, activation, effector function and homeostasis of both CD8(+) and CD4(+) T-cells (PubMed: 20421648 , PubMed: 7805750 , PubMed: 8647185). Also mediates immune tolerance: constitutively expressed on a subset of regulatory T-cells (Tregs) and contributes to their suppressive function (By similarity). Also acts as a negative regulator of plasmacytoid dendritic cell (pDCs) activation (By similarity). Binds MHC class II (MHC-II); the precise role of MHC-II-binding is however unclear (PubMed: 8647185). |

| | |
|--------------------------|--|
| Cellular Location | [Lymphocyte activation gene 3 protein]: Cell membrane; Single-pass type I membrane protein |
| Tissue Location | Primarily expressed in activated T-cells and a subset of natural killer (NK) cells. |

Images



Anti-LAG3 / CD223 Reference Antibody (ieramilimab) on SDS-PAGE under reducing (R) condition. The gel was stained with Coomassie Blue. The purity of the protein is greater than 95%

The purity of Anti-LAG3 / CD223 Reference Antibody (ieramilimab)is more than 95% ,determined by SEC-HPLC.

Please note: All products are 'FOR RESEARCH USE ONLY. NOT FOR USE IN DIAGNOSTIC OR THERAPEUTIC PROCEDURES'.