

# Anti-RHD / CD240d Reference Antibody (roledumab)

Recombinant Antibody

Catalog # APR10502

## Product Information

---

<b>Application</b>	FC, Kinetics, Animal Model
<b>Primary Accession</b>	<a href="#">Q02161</a>
<b>Clonality</b>	Monoclonal
<b>Isotype</b>	IgG1
<b>Calculated MW</b>	45211

## Additional Information

---

<b>Target/Specificity</b>	RHD / CD240d
<b>Endotoxin Conjugation</b>	Unconjugated
<b>Expression system</b>	CHO Cell
<b>Format</b>	Purified monoclonal antibody supplied in PBS, pH6.0, without preservative. This antibody is purified through a protein A column.

## Protein Information

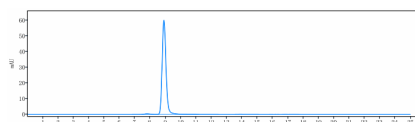
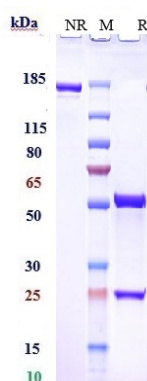
---

<b>Name</b>	RHD
<b>Function</b>	May be part of an oligomeric complex which is likely to have a transport or channel function in the erythrocyte membrane.
<b>Cellular Location</b>	Cell membrane; Multi-pass membrane protein
<b>Tissue Location</b>	Restricted to tissues or cell lines expressing erythroid characters

## Images

---

Anti-RHD / CD240d Reference Antibody (roledumab) on SDS-PAGE under reducing (R) condition. The gel was stained with Coomassie Blue. The purity of the protein is greater than 95%



The purity of Anti-RHD / CD240d Reference Antibody (roledumab) is more than 95% ,determined by SEC-HPLC.

Please note: All products are 'FOR RESEARCH USE ONLY. NOT FOR USE IN DIAGNOSTIC OR THERAPEUTIC PROCEDURES'.