

# Anti-CD28L / CD80 Reference Antibody (galiximab)

Recombinant Antibody

Catalog # APR10515

## Product Information

---

<b>Application</b>	FC, Kinetics, Animal Model
<b>Primary Accession</b>	<a href="#">P33681</a>
<b>Reactivity</b>	Human
<b>Clonality</b>	Monoclonal
<b>Isotype</b>	IgG1
<b>Calculated MW</b>	33048

## Additional Information

---

<b>Target/Specificity</b>	CD28L / CD80
<b>Endotoxin</b>	
<b>Conjugation</b>	Unconjugated
<b>Expression system</b>	CHO Cell
<b>Format</b>	Purified monoclonal antibody supplied in PBS, pH6.0, without preservative. This antibody is purified through a protein A column.

## Protein Information

---

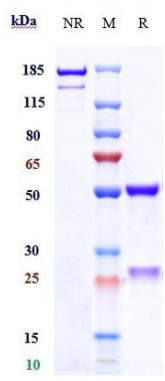
<b>Name</b>	CD80
<b>Synonyms</b>	CD28LG, CD28LG1, LAB7
<b>Function</b>	<p>Costimulatory molecule that belongs to the immunoglobulin superfamily that plays an important role in T-lymphocyte activation (PubMed:<a href="#">38467718</a>). Acts as the primary auxiliary signal augmenting the MHC/TCR signal in naive T-cells together with the CD28 receptor which is constitutively expressed on the cell surface of T-cells (PubMed:<a href="#">12196291</a>). In turn, activates different signaling pathways such as NF-kappa-B or MAPK leading to the production of different cytokines (PubMed:<a href="#">10438913</a>). In addition, CD28/CD80 costimulatory signal stimulates glucose metabolism and ATP synthesis of T-cells by activating the PI3K/Akt signaling pathway (PubMed:<a href="#">12121659</a>). Also acts as a regulator of PDL1/PDCD1 interactions to limit excess engagement of PDL1 and its inhibitory role in immune responses (PubMed:<a href="#">36727298</a>). Expressed on B-cells, plays a critical role in regulating interactions between B-cells and T-cells in both early and late germinal center responses, which are crucial for the generation of effective humoral immune responses (By similarity).</p> <p>Cell membrane; Single-pass type I membrane protein</p>

**Cellular Location**  
**Tissue Location**

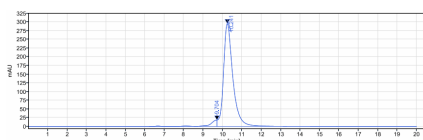
Expressed on activated B-cells, macrophages and dendritic cells

## Images

---



Anti-CD28L / CD80 Reference Antibody (galiximab) on SDS-PAGE under reducing (R) condition. The gel was stained with Coomassie Blue. The purity of the protein is greater than 95%



The purity of Anti-CD28L / CD80 Reference Antibody (galiximab) is more than 95.08% ,determined by SEC-HPLC.

Please note: All products are 'FOR RESEARCH USE ONLY. NOT FOR USE IN DIAGNOSTIC OR THERAPEUTIC PROCEDURES'.