

Anti-Siglec-2 / CD22 Reference Antibody (epratuzumab)

Recombinant Antibody

Catalog # APR10522

Product Information

Application	FC, Kinetics, Animal Model
Primary Accession	P20273
Reactivity	Human
Clonality	Monoclonal
Isotype	IgG4SP
Calculated MW	95348

Additional Information

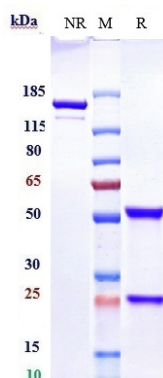
Target/Specificity	Siglec-2 / CD22
Endotoxin	
Conjugation	Unconjugated
Expression system	CHO Cell
Format	Purified monoclonal antibody supplied in PBS, pH6.0, without preservative. This antibody is purified through a protein A column.

Protein Information

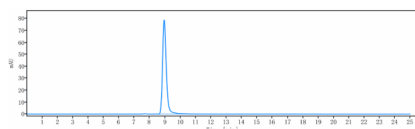
Name	CD22 {ECO:0000303 PubMed:1691828, ECO:0000312 HGNC:HGNC:1643}
Function	<p>Most highly expressed siglec (sialic acid-binding immunoglobulin-like lectin) on B-cells that plays a role in various aspects of B-cell biology including differentiation, antigen presentation, and trafficking to bone marrow (PubMed:34330755, PubMed:8627166). Binds to alpha 2,6-linked sialic acid residues of surface molecules such as CD22 itself, CD45 and IgM in a cis configuration. Can also bind to ligands on other cells as an adhesion molecule in a trans configuration (PubMed:20172905). Acts as an inhibitory coreceptor on the surface of B-cells and inhibits B-cell receptor induced signaling, characterized by inhibition of the calcium mobilization and cellular activation. Mechanistically, the immunoreceptor tyrosine-based inhibitory motif domain is phosphorylated by the Src kinase LYN, which in turn leads to the recruitment of the protein tyrosine phosphatase 1/PTPN6, leading to the negative regulation of BCR signaling (PubMed:8627166). If this negative signaling from is of sufficient strength, apoptosis of the B-cell can be induced (PubMed:20516366).</p>
Cellular Location	<p>Cell membrane; Single-pass type I membrane protein</p> <p>B-lymphocytes.</p>

Tissue Location

Images



Anti-Siglec-2 / CD22 Reference Antibody (epratuzumab) on SDS-PAGE under reducing (R) condition. The gel was stained with Coomassie Blue. The purity of the protein is greater than 95%



The purity of Anti-Siglec-2 / CD22 Reference Antibody (epratuzumab) is more than 100% ,determined by SEC-HPLC.

Please note: All products are 'FOR RESEARCH USE ONLY. NOT FOR USE IN DIAGNOSTIC OR THERAPEUTIC PROCEDURES'.