

Anti-Siglec-3 / CD33 Reference Antibody (lintuzumAb)

Recombinant Antibody

Catalog # APR10525

Product Information

| | |
|--------------------------|----------------------------|
| Application | FC, Kinetics, Animal Model |
| Primary Accession | O14793 |
| Reactivity | Human |
| Clonality | Monoclonal |
| Isotype | IgG1 |
| Calculated MW | 42750 |

Additional Information

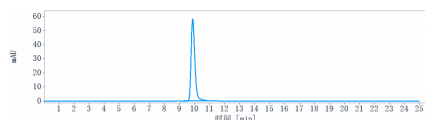
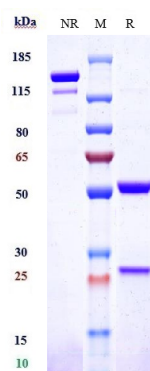
| | |
|---------------------------|----------------------------------------------------------------------------------------------------------------------------------|
| Target/Specificity | GDF8 / Myostatin |
| Endotoxin | |
| Conjugation | Unconjugated |
| Expression system | CHO Cell |
| Format | Purified monoclonal antibody supplied in PBS, pH6.0, without preservative. This antibody is purified through a protein A column. |

Protein Information

| | |
|--------------------------|----------------------------------------------------------------------|
| Name | MSTN |
| Synonyms | GDF8 |
| Function | Acts specifically as a negative regulator of skeletal muscle growth. |
| Cellular Location | Secreted {ECO:0000250 UniProtKB:O08689}. |

Images

Anti-Siglec-3 / CD33 Reference Antibody (lintuzumAb) on SDS-PAGE under reducing (R) condition. The gel was stained with Coomassie Blue. The purity of the protein is greater than 90%



The purity of Anti-Siglec-3 / CD33 Reference Antibody (lintuzumAb) is more than 95% ,determined by SEC-HPLC.

Please note: All products are 'FOR RESEARCH USE ONLY. NOT FOR USE IN DIAGNOSTIC OR THERAPEUTIC PROCEDURES'.