

Anti-L-selectin Reference Antibody (Aselizumab)

Recombinant Antibody

Catalog # APR10527

Product Information

Application	FC, Kinetics, Animal Model
Primary Accession	P14151
Reactivity	Human
Clonality	Monoclonal
Isotype	IgG2A
Calculated MW	42187

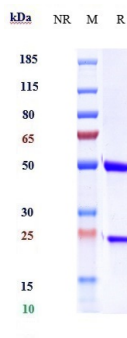
Additional Information

Target/Specificity	L-selectin
Endotoxin	
Conjugation	Unconjugated
Expression system	CHO Cell
Format	Purified monoclonal antibody supplied in PBS, pH6.0, without preservative. This antibody is purified through a protein A column.

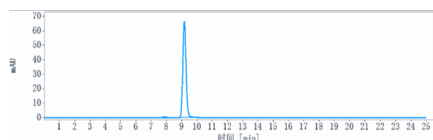
Protein Information

Name	SELL
Synonyms	LNHR, LYAM1
Function	Calcium-dependent lectin that mediates cell adhesion by binding to glycoproteins on neighboring cells (PubMed: 12403782 , PubMed: 28011641 , PubMed: 28489325). Mediates the adherence of lymphocytes to endothelial cells of high endothelial venules in peripheral lymph nodes. Promotes initial tethering and rolling of leukocytes in endothelia (PubMed: 12403782 , PubMed: 28011641).
Cellular Location	Cell membrane; Single-pass type I membrane protein
Tissue Location	Expressed in B-cell lines and T-lymphocytes.

Images



SDS-PAGE under reducing (R) condition. The gel was stained with Coomassie Blue. The purity of the protein is greater than 90%



The purity of Anti-L-selectin Reference Antibody (Aselizumab) is more than 95% ,determined by SEC-HPLC.

Please note: All products are 'FOR RESEARCH USE ONLY. NOT FOR USE IN DIAGNOSTIC OR THERAPEUTIC PROCEDURES'.