

Anti-TNFRSF10A / TRAILR1 / CD261 Reference Antibody (mapatumumab)

Recombinant Antibody
Catalog # APR10535

Product Information

Application	FC, Kinetics, Animal Model
Primary Accession	O00220
Reactivity	Human
Clonality	Monoclonal
Isotype	IgG2SA
Calculated MW	50089

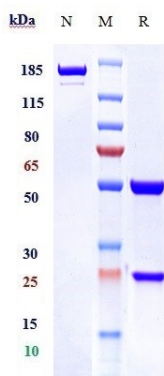
Additional Information

Target/Specificity	TNFRSF10A / TRAILR1 / CD261
Endotoxin Conjugation	Unconjugated
Expression system	CHO Cell
Format	Purified monoclonal antibody supplied in PBS, pH6.0, without preservative. This antibody is purified through a protein A column.

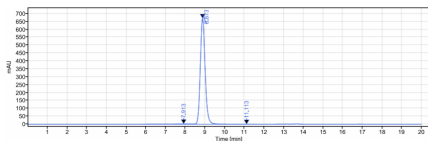
Protein Information

Name	TNFRSF10A
Synonyms	APO2, DR4, TRAILR1
Function	Receptor for the cytotoxic ligand TNFSF10/TRAIL (PubMed: 26457518 , PubMed: 38532423). The adapter molecule FADD recruits caspase-8 to the activated receptor. The resulting death-inducing signaling complex (DISC) performs caspase-8 proteolytic activation which initiates the subsequent cascade of caspases (aspartate-specific cysteine proteases) mediating apoptosis (PubMed: 19090789). Promotes the activation of NF-kappa-B (PubMed: 9430227).
Cellular Location	Cell membrane; Single-pass type I membrane protein. Membrane raft. Cytoplasm, cytosol. Note=Palmitoylation is required for association with membranes.
Tissue Location	Widely expressed. High levels are found in spleen, peripheral blood leukocytes, small intestine and thymus, but also in K-562 erythroleukemia cells, MCF-7 breast carcinoma cells and activated T-cells

Images



Anti-TNFRSF10A / TRAILR1 / CD261 Reference Antibody (mapatumumab) on SDS-PAGE under reducing (R) condition. The gel was stained with Coomassie Blue. The purity of the protein is greater than 95%



The purity of Anti-TNFRSF10A / TRAILR1 / CD261 Reference Antibody (mapatumumab) is more than 98.89% ,determined by SEC-HPLC.

Please note: All products are 'FOR RESEARCH USE ONLY. NOT FOR USE IN DIAGNOSTIC OR THERAPEUTIC PROCEDURES'.