

# Anti-LAG3 / CD223 Reference Antibody (encelimumab)

Recombinant Antibody  
Catalog # APR10545

## Product Information

Application	FC, Kinetics, Animal Model
Primary Accession	<a href="#">P18627</a>
Reactivity	Human, Mouse
Clonality	Monoclonal
Isotype	IgG4SP
Calculated MW	57449

## Additional Information

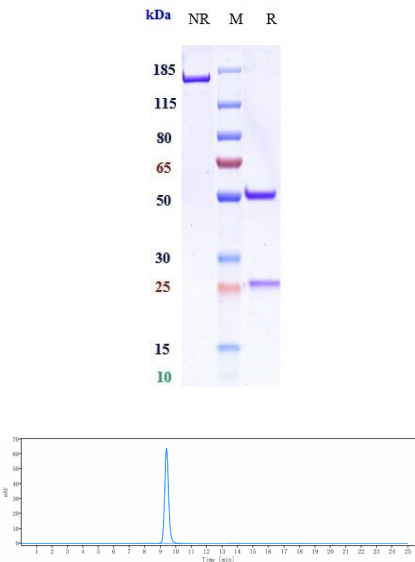
Target/Specificity	LAG3 / CD223
Endotoxin	
Conjugation	Unconjugated
Expression system	CHO Cell
Format	Purified monoclonal antibody supplied in PBS, pH6.0, without preservative. This antibody is purified through a protein A column.

## Protein Information

Name	LAG3 ( <a href="#">HGNC:6476</a> )
Synonyms	FDC
Function	Lymphocyte activation gene 3 protein: Inhibitory receptor on antigen activated T-cells (PubMed: <a href="#">20421648</a> , PubMed: <a href="#">7805750</a> , PubMed: <a href="#">8647185</a> ). Delivers inhibitory signals upon binding to ligands, such as FGL1 (By similarity). FGL1 constitutes a major ligand of LAG3 and is responsible for LAG3 T-cell inhibitory function (By similarity). Following TCR engagement, LAG3 associates with CD3-TCR in the immunological synapse and directly inhibits T-cell activation (By similarity). May inhibit antigen-specific T-cell activation in synergy with PDCD1/PD-1, possibly by acting as a coreceptor for PDCD1/PD-1 (By similarity). Negatively regulates the proliferation, activation, effector function and homeostasis of both CD8(+) and CD4(+) T-cells (PubMed: <a href="#">20421648</a> , PubMed: <a href="#">7805750</a> , PubMed: <a href="#">8647185</a> ). Also mediates immune tolerance: constitutively expressed on a subset of regulatory T-cells (Tregs) and contributes to their suppressive function (By similarity). Also acts as a negative regulator of plasmacytoid dendritic cell (pDCs) activation (By similarity). Binds MHC class II (MHC-II); the precise role of MHC-II-binding is however unclear (PubMed: <a href="#">8647185</a> ).

Cellular Location	[Lymphocyte activation gene 3 protein]: Cell membrane; Single-pass type I membrane protein
Tissue Location	Primarily expressed in activated T-cells and a subset of natural killer (NK) cells.

Images



Anti-LAG3 / CD223 Reference Antibody (encelimab) on SDS-PAGE under reducing (R) condition. The gel was stained with Coomassie Blue. The purity of the protein is greater than 95%

The purity of Anti-LAG3 / CD223 Reference Antibody (encelimab)is more than 95% ,determined by SEC-HPLC.

Please note: All products are 'FOR RESEARCH USE ONLY. NOT FOR USE IN DIAGNOSTIC OR THERAPEUTIC PROCEDURES'.