

Anti-GPR20 Reference Antibody (DS-6157)

Recombinant Antibody
Catalog # APR10587

Product Information

Application	FC, Kinetics, Animal Model
Primary Accession	Q99678
Reactivity	Human
Clonality	Monoclonal
Isotype	IgG1
Calculated MW	38650

Additional Information

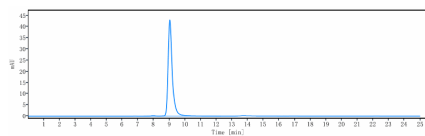
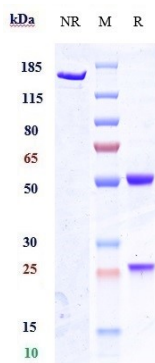
Target/Specificity	GPR20
Endotoxin Conjugation	Unconjugated
Expression system	CHO Cell
Format	Purified monoclonal antibody supplied in PBS, pH6.0, without preservative. This antibody is purified through a protein A column.

Protein Information

Name	GPR20
Function	Orphan receptor with constitutive G(i) signaling activity that activate cyclic AMP.
Cellular Location	Cell membrane; Multi-pass membrane protein
Tissue Location	Ubiquitous with highest levels in intestinal tissues. In the brain detected in thalamus, putamen, and caudate, but not in frontal cortex, pons and hypothalamus

Images

Anti-GPR20 Reference Antibody (DS-6157) on SDS-PAGE under reducing (R) condition. The gel was stained with Coomassie Blue. The purity of the protein is greater than 90%



The purity of Anti-GPR20 Reference Antibody (DS-6157) is more than 95% ,determined by SEC-HPLC.

Please note: All products are 'FOR RESEARCH USE ONLY. NOT FOR USE IN DIAGNOSTIC OR THERAPEUTIC PROCEDURES'.