

# Anti-IL-1RL1 / ST2 / IL-33R Reference Antibody (melrilimab)

Recombinant Antibody  
Catalog # APR10605

## Product Information

---

<b>Application</b>	FC, Kinetics, Animal Model
<b>Primary Accession</b>	<a href="#">Q01638</a>
<b>Reactivity</b>	Human, Mouse
<b>Clonality</b>	Monoclonal
<b>Isotype</b>	IgG2SA
<b>Calculated MW</b>	63358

## Additional Information

---

<b>Target/Specificity</b>	IL-1RL1 / ST2 / IL-33R
<b>Endotoxin Conjugation</b>	Unconjugated
<b>Expression system</b>	CHO Cell
<b>Format</b>	Purified monoclonal antibody supplied in PBS, pH6.0, without preservative. This antibody is purified through a protein A column.

## Protein Information

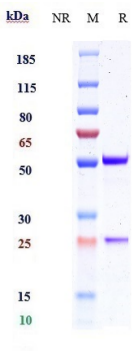
---

<b>Name</b>	IL1RL1
<b>Synonyms</b>	DER4, ST2, T1
<b>Function</b>	Receptor for interleukin-33 (IL-33) which plays crucial roles in innate and adaptive immunity, contributing to tissue homeostasis and responses to environmental stresses together with coreceptor IL1RAP (PubMed: <a href="#">35238669</a> ). Its stimulation recruits MYD88, IRAK1, IRAK4, and TRAF6, followed by phosphorylation of MAPK3/ERK1 and/or MAPK1/ERK2, MAPK14, and MAPK8. Possibly involved in helper T-cell function (Probable) (PubMed: <a href="#">16286016</a> ). Upon tissue injury, induces UCP2- dependent mitochondrial rewiring that attenuates the generation of reactive oxygen species and preserves the integrity of Krebs cycle required for persistent production of itaconate and subsequent GATA3- dependent differentiation of inflammation-resolving alternatively activated macrophages (By similarity).
<b>Cellular Location</b>	[Isoform C]: Cell membrane. Cell membrane; Single-pass type I membrane protein

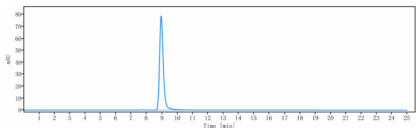
Tissue Location

Highly expressed in kidney, lung, placenta, stomach, skeletal muscle, colon and small intestine. Isoform A is prevalently expressed in the lung, testis, placenta, stomach and colon Isoform B is more abundant in the brain, kidney and the liver. Isoform C is not detected in brain, heart, liver, kidney and skeletal muscle Expressed on T-cells in fibrotic liver; at protein level. Overexpressed in fibrotic and cirrhotic liver.

Images



Anti-IL-1RL1 / ST2 / IL-33R Reference Antibody (melrilimab) on SDS-PAGE under reducing (R) condition. The gel was stained with Coomassie Blue. The purity of the protein is greater than 95%



The purity of Anti-IL-1RL1 / ST2 / IL-33R Reference Antibody (melrilimab) is more than 95% ,determined by SEC-HPLC.

Please note: All products are 'FOR RESEARCH USE ONLY. NOT FOR USE IN DIAGNOSTIC OR THERAPEUTIC PROCEDURES'.