

Anti-FGF23 Reference Antibody (burosumab)

Recombinant Antibody

Catalog # APR10626

Product Information

Application	FC, Kinetics, Animal Model
Primary Accession	Q9GZV9
Reactivity	Human
Clonality	Monoclonal
Isotype	IgG1
Calculated MW	27954

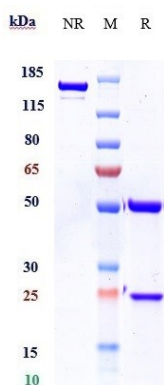
Additional Information

Target/Specificity	FGF23
Endotoxin	
Conjugation	Unconjugated
Expression system	CHO Cell
Format	Purified monoclonal antibody supplied in PBS, pH6.0, without preservative. This antibody is purified through a protein A column.

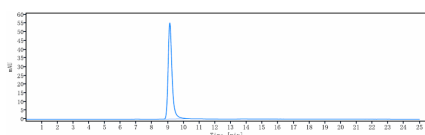
Protein Information

Name	FGF23
Synonyms	HYPF
Function	Regulator of phosphate homeostasis (PubMed: 11062477). Inhibits renal tubular phosphate transport by reducing SLC34A1 levels (PubMed: 11409890). Up-regulates EGR1 expression in the presence of KL (By similarity). Acts directly on the parathyroid to decrease PTH secretion (By similarity). Regulator of vitamin-D metabolism (PubMed: 15040831). Negatively regulates osteoblast differentiation and matrix mineralization (PubMed: 18282132).
Cellular Location	Secreted. Note=Secretion is dependent on O-glycosylation
Tissue Location	Expressed in osteogenic cells particularly during phases of active bone remodeling. In adult trabecular bone, expressed in osteocytes and flattened bone-lining cells (inactive osteoblasts)

Images



Anti-FGF23 Reference Antibody (burosumab) on SDS-PAGE under reducing (R) condition. The gel was stained with Coomassie Blue. The purity of the protein is greater than 95%



The purity of Anti-FGF23 Reference Antibody (burosumab) is more than 95% ,determined by SEC-HPLC.

Please note: All products are 'FOR RESEARCH USE ONLY. NOT FOR USE IN DIAGNOSTIC OR THERAPEUTIC PROCEDURES'.