

Anti-Alpha-synuclein Reference Antibody (cinpanemab)

Recombinant Antibody

Catalog # APR10644

Product Information

Application	FC, Kinetics, Animal Model
Primary Accession	Q9Y6H5
Reactivity	Human, Mouse
Clonality	Monoclonal
Isotype	IgG1
Calculated MW	100409

Additional Information

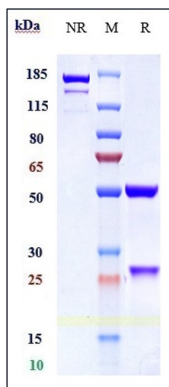
Target/Specificity	Alpha-synuclein
Endotoxin	
Conjugation	Unconjugated
Expression system	CHO Cell
Format	Purified monoclonal antibody supplied in PBS, pH6.0, without preservative. This antibody is purified through a protein A column.

Protein Information

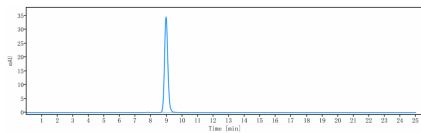
Name	SNCAIP
Function	Isoform 2 inhibits the ubiquitin ligase activity of SIAH1 and inhibits proteasomal degradation of target proteins. Isoform 2 inhibits autoubiquitination and proteasomal degradation of SIAH1, and thereby increases cellular levels of SIAH. Isoform 2 modulates SNCA monoubiquitination by SIAH1.
Cellular Location	Cytoplasm. Note=Detected in cytoplasmic inclusion bodies, together with SNCA
Tissue Location	Detected in brain (at protein level). Widely expressed, with highest levels in brain, heart and placenta

Images

Anti-Alpha-synuclein Reference Antibody (cinpanemab)
on SDS-PAGE under reducing (R) condition. The gel was



stained with Coomassie Blue. The purity of the protein is greater than 95%



The purity of Anti-Alpha-synuclein Reference Antibody (cinpanemab) is more than 99.69% ,determined by SEC-HPLC.

Please note: All products are 'FOR RESEARCH USE ONLY. NOT FOR USE IN DIAGNOSTIC OR THERAPEUTIC PROCEDURES'.