

# Anti-LAG3 / CD223 Reference Antibody (miptenalimab)

Recombinant Antibody

Catalog # APR10646

## Product Information

Application	FC, Kinetics, Animal Model
Primary Accession	<a href="#">P18627</a>
Reactivity	Human
Clonality	Monoclonal
Isotype	IgG4SP
Calculated MW	57449

## Additional Information

Target/Specificity	LAG3 / CD223
Endotoxin	
Conjugation	Unconjugated
Expression system	CHO Cell
Format	Purified monoclonal antibody supplied in PBS, pH6.0, without preservative. This antibody is purified through a protein A column.

## Protein Information

Name	LAG3 {ECO:0000303 PubMed:35761082, ECO:0000312 HGNC:HGNC:6476}
Function	[Lymphocyte activation gene 3 protein]: Inhibitory receptor on antigen activated T-cells (PubMed: <a href="#">20421648</a> , PubMed: <a href="#">35761082</a> , PubMed: <a href="#">7805750</a> , PubMed: <a href="#">8647185</a> ). Delivers inhibitory signals upon binding to ligands, such as MHC class II, its main ligand present at the surface of antigen-presenting cells (APCs), and FGL1, which is secreted by hepatocytes and certain types of tumor cells (PubMed: <a href="#">30580966</a> , PubMed: <a href="#">32920841</a> , PubMed: <a href="#">35761082</a> , PubMed: <a href="#">39671469</a> , PubMed: <a href="#">7589152</a> , PubMed: <a href="#">8647185</a> , PubMed: <a href="#">9159144</a> ). Ligand-binding initiates a signaling that inhibits the T-cell receptor (TCR) in the immunological synapse, preventing T-cell activation (PubMed: <a href="#">40101708</a> ). Mechanistically, ligand-binding promotes (1) ubiquitination of the KIEELE motif, unleashing the RRFSALE motif from the membrane and (2) leading to the formation of condensates with the TCR component CD3E, thereby disrupting the association between CD3E and LCK and preventing TCR activation (PubMed: <a href="#">40101708</a> , PubMed: <a href="#">40592325</a> ). May inhibit antigen-specific T-cell activation in synergy with PDCD1/PD-1 (By similarity). Negatively regulates the proliferation, activation, effector function and homeostasis of both CD8(+) and CD4(+) T-cells (PubMed: <a href="#">20421648</a> , PubMed: <a href="#">7805750</a> , PubMed: <a href="#">8647185</a> ). Also mediates immune tolerance: constitutively expressed on a subset of regulatory T-cells (Tregs) and contributes to their suppressive

function (By similarity). Also acts as a negative regulator of plasmacytoid dendritic cell (pDCs) activation (By similarity).

## Cellular Location

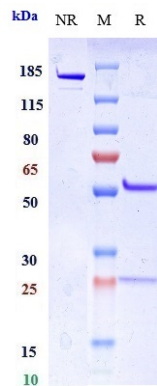
[Lymphocyte activation gene 3 protein]: Cell membrane; Single-pass type I membrane protein. Note=Clusters on the T-cell surface following ligand-binding

## Tissue Location

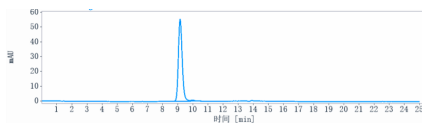
Primarily expressed in activated T-cells and a subset of natural killer (NK) cells.

## Images

---



Anti-LAG3 / CD223 Reference Antibody (miptenalimab) on SDS-PAGE under reducing (R) condition. The gel was stained with Coomassie Blue. The purity of the protein is greater than 95%



The purity of Anti-LAG3 / CD223 Reference Antibody (miptenalimab) is more than 95% ,determined by SEC-HPLC.

Please note: All products are 'FOR RESEARCH USE ONLY. NOT FOR USE IN DIAGNOSTIC OR THERAPEUTIC PROCEDURES'.