

# Anti-TGFb1 Reference Antibody (Metelimumab)

Recombinant Antibody  
Catalog # APR10672

## Product Information

---

<b>Application</b>	FC, Kinetics, Animal Model
<b>Primary Accession</b>	<a href="#">P01137</a>
<b>Reactivity</b>	Human, Mouse, Rat
<b>Clonality</b>	Monoclonal
<b>Isotype</b>	IgG4SP
<b>Calculated MW</b>	44325

## Additional Information

---

<b>Target/Specificity</b>	TGFb1
<b>Endotoxin</b>	
<b>Conjugation</b>	Unconjugated
<b>Expression system</b>	CHO Cell
<b>Format</b>	Purified monoclonal antibody supplied in PBS, pH6.0, without preservative. This antibody is purified through a protein A column.

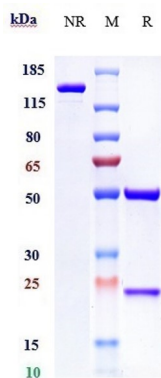
## Protein Information

---

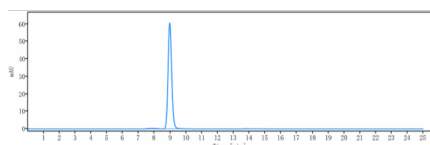
<b>Name</b>	TGFB1 ( <a href="#">HGNC:11766</a> )
<b>Synonyms</b>	TGFB
<b>Function</b>	Transforming growth factor beta-1 proprotein: Precursor of the Latency-associated peptide (LAP) and Transforming growth factor beta-1 (TGF-beta-1) chains, which constitute the regulatory and active subunit of TGF-beta-1, respectively.
<b>Cellular Location</b>	[Latency-associated peptide]: Secreted, extracellular space, extracellular matrix
<b>Tissue Location</b>	Highly expressed in bone (PubMed:11746498, PubMed:17827158). Abundantly expressed in articular cartilage and chondrocytes and is increased in osteoarthritis (OA) (PubMed:11746498, PubMed:17827158). Colocalizes with ASPN in chondrocytes within OA lesions of articular cartilage (PubMed:17827158)

## Images

---



Anti-TGFb1 Reference Antibody (Metelimumab) on SDS-PAGE under reducing (R) condition. The gel was stained with Coomassie Blue. The purity of the protein is greater than 95%



The purity of Anti-TGFb1 Reference Antibody (Metelimumab) is more than 98.98% ,determined by SEC-HPLC.

Please note: All products are 'FOR RESEARCH USE ONLY. NOT FOR USE IN DIAGNOSTIC OR THERAPEUTIC PROCEDURES'.