

Anti-PSCA Reference Antibody (AGS-1C4D4)

Recombinant Antibody

Catalog # APR10677

Product Information

Application	FC, Kinetics, Animal Model
Primary Accession	O43653
Reactivity	Human, Mouse
Clonality	Monoclonal
Isotype	IgG1
Calculated MW	11959

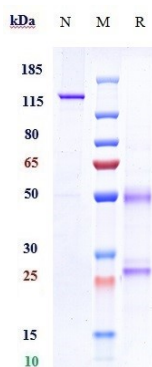
Additional Information

Target/Specificity	PSCA
Endotoxin	
Conjugation	Unconjugated
Expression system	CHO Cell
Format	Purified monoclonal antibody supplied in PBS, pH6.0, without preservative. This antibody is purified through a protein A column.

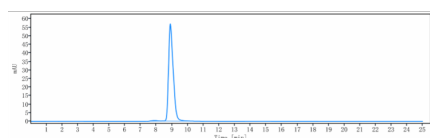
Protein Information

Name	PSCA
Function	May be involved in the regulation of cell proliferation. Has a cell-proliferation inhibition activity in vitro.
Cellular Location	Cell membrane; Lipid-anchor, GPI-anchor
Tissue Location	Highly expressed in prostate (basal, secretory and neuroendocrine epithelium cells). Also found in bladder (transitional epithelium), placenta (trophoblasts), stomach (neuroendocrine cells), colon (neuroendocrine cells) and kidney (collecting ducts) Overexpressed in prostate cancers and expression is correlated with tumor stage, grade and androgen-independence. Highly expressed in prostate cancer bone metastases. Expressed in gastric epithelial cells, mainly in the isthmus (at protein level). Not detected in normal intestinal epithelium (at protein level). Expressed in brain cortex; expression is significantly increased in the front cortex of Alzheimer disease patients.

Images



Anti-PSCA Reference Antibody (AGS-1C4D4) on SDS-PAGE under reducing (R) condition. The gel was stained with Coomassie Blue. The purity of the protein is greater than 97.9%



The purity of Anti-PSCA Reference Antibody (AGS-1C4D4) is more than 95% ,determined by SEC-HPLC.

Please note: All products are 'FOR RESEARCH USE ONLY. NOT FOR USE IN DIAGNOSTIC OR THERAPEUTIC PROCEDURES'.