

Anti-Mesothelin Reference Antibody (anetumab ravtansine)

Recombinant Antibody
Catalog # APR10681

Product Information

| | |
|--------------------------|----------------------------|
| Application | FC, Kinetics, Animal Model |
| Primary Accession | Q13421 |
| Reactivity | Human |
| Clonality | Monoclonal |
| Isotype | IgG1 |
| Calculated MW | 68986 |

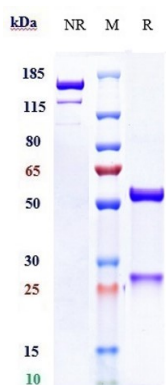
Additional Information

| | |
|----------------------------------|--|
| Target/Specificity | Mesothelin |
| Endotoxin Conjugation | DM4 |
| Expression system | CHO Cell |
| Format | Purified monoclonal antibody supplied in PBS, pH6.0, without preservative. This antibody is purified through a protein A column. |

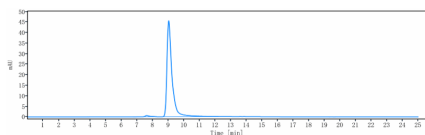
Protein Information

| | |
|--------------------------|---|
| Name | MSLN |
| Synonyms | MPF |
| Function | Membrane-anchored forms may play a role in cellular adhesion. |
| Cellular Location | Cell membrane; Lipid-anchor, GPI-anchor. Golgi apparatus [Isoform 3]: Secreted. |
| Tissue Location | Expressed in lung. Expressed at low levels in heart, placenta and kidney. Expressed in mesothelial cells. Highly expressed in mesotheliomas, ovarian cancers, and some squamous cell carcinomas (at protein level). |

Images



ravtansine) on SDS-PAGE under reducing (R) condition. The gel was stained with Coomassie Blue. The purity of the protein is greater than 95%



The purity of Anti-Mesothelin Reference Antibody (anetumab ravtansine) is more than 98.58% ,determined by SEC-HPLC.

Please note: All products are 'FOR RESEARCH USE ONLY. NOT FOR USE IN DIAGNOSTIC OR THERAPEUTIC PROCEDURES'.