

# Anti-Ly6E Reference Antibody (RG7841)

Recombinant Antibody

Catalog # APR10683

## Product Information

Application	FC, Kinetics, Animal Model
Primary Accession	<a href="#">Q16553</a>
Reactivity	Human
Clonality	Monoclonal
Isotype	IgG2SA
Calculated MW	13507

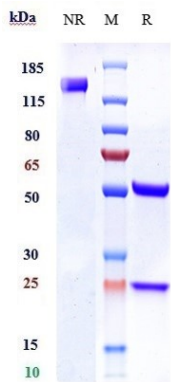
## Additional Information

Target/Specificity	Ly6E
Endotoxin	
Conjugation	Unconjugated
Expression system	CHO Cell
Format	Purified monoclonal antibody supplied in PBS, pH6.0, without preservative. This antibody is purified through a protein A column.

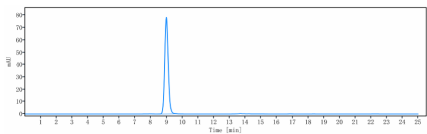
## Protein Information

Name	LY6E ( <a href="#">HGNC:6727</a> )
Synonyms	9804, RIGE, SCA2, TSA1
Function	<p>GPI-anchored cell surface protein that regulates T- lymphocytes proliferation, differentiation, and activation. Regulates the T-cell receptor (TCR) signaling by interacting with component CD3Z/CD247 at the plasma membrane, leading to CD3Z/CD247 phosphorylation modulation (By similarity). Restricts the entry of human coronaviruses, including SARS-CoV, MERS-CoV and SARS-CoV-2, by interfering with spike protein-mediated membrane fusion (PubMed:<a href="#">32641482</a>). Also plays an essential role in placenta formation by acting as the main receptor for syncytin-A (SynA). Therefore, participates in the normal fusion of syncytiotrophoblast layer I (SynT- I) and in the proper morphogenesis of both fetal and maternal vasculatures within the placenta. May also act as a modulator of nicotinic acetylcholine receptors (nAChRs) activity (By similarity).</p>
Cellular Location	<p>Cell membrane {ECO:0000250 UniProtKB:Q64253}; Lipid-anchor, GPI-anchor {ECO:0000250 UniProtKB:Q64253}</p> <p>Widely expressed, predominantly in liver, kidney, ovary, spleen and peripheral</p>

Images



Anti-Ly6E Reference Antibody (RG7841) on SDS-PAGE under reducing (R) condition. The gel was stained with Coomassie Blue. The purity of the protein is greater than 95%



The purity of Anti-Ly6E Reference Antibody (RG7841) is more than 95% ,determined by SEC-HPLC.

Please note: All products are 'FOR RESEARCH USE ONLY. NOT FOR USE IN DIAGNOSTIC OR THERAPEUTIC PROCEDURES'.