

# Anti-DPP4 / CD26 Reference Antibody (begelomab)

Recombinant Antibody  
Catalog # APR10704

## Product Information

---

Application	FC, Kinetics, Animal Model
Primary Accession	<a href="#">P27487</a>
Reactivity	Human
Clonality	Monoclonal
Isotype	IgG2SA
Calculated MW	88279

## Additional Information

---

Target/Specificity	DPP4 / CD26
Endotoxin Conjugation	Unconjugated
Expression system	CHO Cell
Format	Purified monoclonal antibody supplied in PBS, pH6.0, without preservative. This antibody is purified through a protein A column.

## Protein Information

---

Name	DPP4 ( <a href="#">HGNC:3009</a> )
Synonyms	ADCP2, CD26
Function	<p>Cell surface glycoprotein receptor involved in the costimulatory signal essential for T-cell receptor (TCR)-mediated T- cell activation (PubMed:<a href="#">10900005</a>, PubMed:<a href="#">10951221</a>, PubMed:<a href="#">11772392</a>, PubMed:<a href="#">17287217</a>). Acts as a positive regulator of T-cell coactivation, by binding at least ADA, CAV1, IGF2R, and PTPRC (PubMed:<a href="#">10900005</a>, PubMed:<a href="#">10951221</a>, PubMed:<a href="#">11772392</a>, PubMed:<a href="#">14691230</a>). Its binding to CAV1 and CARD11 induces T-cell proliferation and NF-kappa-B activation in a T-cell receptor/CD3-dependent manner (PubMed:<a href="#">17287217</a>). Its interaction with ADA also regulates lymphocyte-epithelial cell adhesion (PubMed:<a href="#">11772392</a>). In association with FAP is involved in the pericellular proteolysis of the extracellular matrix (ECM), the migration and invasion of endothelial cells into the ECM (PubMed:<a href="#">10593948</a>, PubMed:<a href="#">16651416</a>). May be involved in the promotion of lymphatic endothelial cells adhesion, migration and tube formation (PubMed:<a href="#">18708048</a>). When overexpressed, enhanced cell proliferation, a process inhibited by GPC3 (PubMed:<a href="#">17549790</a>). Also acts as a serine exopeptidase with a dipeptidyl peptidase activity that regulates various physiological processes by cleaving peptides in the</p>

circulation, including many chemokines, mitogenic growth factors, neuropeptides and peptide hormones such as brain natriuretic peptide 32 (PubMed:[10570924](#), PubMed:[16254193](#)). Removes N-terminal dipeptides sequentially from polypeptides having unsubstituted N-termini provided that the penultimate residue is proline (PubMed:[10593948](#)).

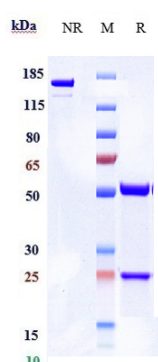
## Cellular Location

[Dipeptidyl peptidase 4 soluble form]: Secreted Note=Detected in the serum and the seminal fluid

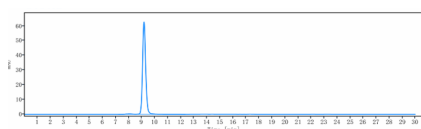
## Tissue Location

Expressed specifically in lymphatic vessels but not in blood vessels in the skin, small intestine, esophagus, ovary, breast and prostate glands. Not detected in lymphatic vessels in the lung, kidney, uterus, liver and stomach (at protein level). Expressed in the poorly differentiated crypt cells of the small intestine as well as in the mature villous cells. Expressed at very low levels in the colon

## Images



Anti-DPP4 / CD26 Reference Antibody (begelomab) on SDS-PAGE under reducing (R) condition. The gel was stained with Coomassie Blue. The purity of the protein is greater than 95%



The purity of Anti-DPP4 / CD26 Reference Antibody (begelomab) is more than 98.65 %, determined by SEC-HPLC.

Please note: All products are 'FOR RESEARCH USE ONLY. NOT FOR USE IN DIAGNOSTIC OR THERAPEUTIC PROCEDURES'.