

# Anti-Integrin b2 / ITGB2 / CD18 Reference Antibody (erlizumab)

Recombinant Antibody  
Catalog # APR10706

## Product Information

---

<b>Application</b>	FC, Kinetics, Animal Model
<b>Primary Accession</b>	<a href="#">P08514</a>
<b>Reactivity</b>	Human
<b>Clonality</b>	Monoclonal
<b>Isotype</b>	IgG1
<b>Calculated MW</b>	113377

## Additional Information

---

<b>Target/Specificity</b>	Integrin b2 / ITGB2 / CD18
<b>Endotoxin Conjugation</b>	Unconjugated
<b>Expression system</b>	CHO Cell
<b>Format</b>	Purified monoclonal antibody supplied in PBS, pH6.0, without preservative. This antibody is purified through a protein A column.

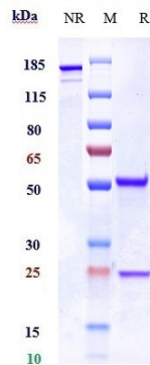
## Protein Information

---

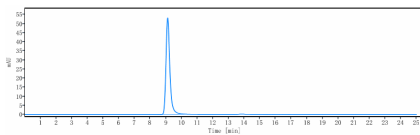
<b>Name</b>	ITGA2B
<b>Synonyms</b>	GP2B, ITGAB
<b>Function</b>	Integrin alpha-IIb/beta-3 is a receptor for fibronectin, fibrinogen, plasminogen, prothrombin, thrombospondin and vitronectin. It recognizes the sequence R-G-D in a wide array of ligands. It recognizes the sequence H-H-L-G-G-A-K-Q-A-G-D-V in fibrinogen gamma chain (By similarity). Following activation integrin alpha-IIb/beta-3 brings about platelet/platelet interaction through binding of soluble fibrinogen (PubMed: <a href="#">9111081</a> ). This step leads to rapid platelet aggregation which physically plugs ruptured endothelial cell surface (By similarity).
<b>Cellular Location</b>	Membrane; Single-pass type I membrane protein.
<b>Tissue Location</b>	Isoform 1 and isoform 2 are expressed in platelets and megakaryocytes, but not in reticulocytes. Not detected in Jurkat, nor in U937 cell lines (PubMed:2351656). Isoform 3 is expressed in prostate adenocarcinoma, as well as in several erythroleukemia, prostate adenocarcinoma and melanoma

cell lines, including PC-3, DU- 145, HEL, WM983A, WM983B and WM35. Not detected in platelets, nor in normal prostate (at protein level)  
(PubMed:9809974)

## Images



Anti-Integrin b2 / ITGB2 / CD18 Reference Antibody (erlizumab) on SDS-PAGE under reducing (R) condition. The gel was stained with Coomassie Blue. The purity of the protein is greater than 90%



The purity of Anti-Integrin b2 / ITGB2 / CD18 Reference Antibody (erlizumab) is more than 95% ,determined by SEC-HPLC.

Please note: All products are 'FOR RESEARCH USE ONLY. NOT FOR USE IN DIAGNOSTIC OR THERAPEUTIC PROCEDURES'.