

Anti-PSGL1 / CD162 Reference Antibody (neihulizumab)

Recombinant Antibody

Catalog # APR10713

Product Information

Application	FC, Kinetics, Animal Model
Primary Accession	Q14242
Reactivity	Human, Mouse
Clonality	Monoclonal
Isotype	IgG4
Calculated MW	43201

Additional Information

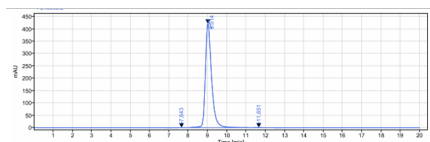
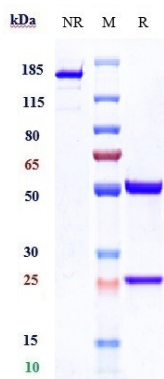
Target/Specificity	PSGL1 / CD162
Endotoxin Conjugation	Unconjugated
Expression system	CHO Cell
Format	Purified monoclonal antibody supplied in PBS, pH6.0, without preservative. This antibody is purified through a protein A column.

Protein Information

Name	SELPLG
Function	A SLe(x)-type proteoglycan, which through high affinity, calcium-dependent interactions with E-, P- and L-selectins, mediates rapid rolling of leukocytes over vascular surfaces during the initial steps in inflammation. Critical for the initial leukocyte capture.
Cellular Location	Membrane; Single-pass type I membrane protein.
Tissue Location	Expressed on neutrophils, monocytes and most lymphocytes

Images

Anti-PSGL1 / CD162 Reference Antibody (neihulizumab) on SDS-PAGE under reducing (R) condition. The gel was stained with Coomassie Blue. The purity of the protein is greater than 95%



The purity of Anti-PSGL1 / CD162 Reference Antibody (neihulizumab) is more than 99.48% ,determined by SEC-HPLC.

Please note: All products are 'FOR RESEARCH USE ONLY. NOT FOR USE IN DIAGNOSTIC OR THERAPEUTIC PROCEDURES'.