

Anti-Siglec-8 Reference Antibody (lirentelimab)

Recombinant Antibody

Catalog # APR10724

Product Information

Application	FC, Kinetics, Animal Model
Primary Accession	Q9NYZ4
Reactivity	Human, Mouse
Clonality	Monoclonal
Isotype	IgG1
Calculated MW	54042

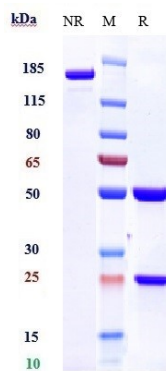
Additional Information

Target/Specificity	Siglec-8
Endotoxin	
Conjugation	Unconjugated
Expression system	CHO Cell
Format	Purified monoclonal antibody supplied in PBS, pH6.0, without preservative. This antibody is purified through a protein A column.

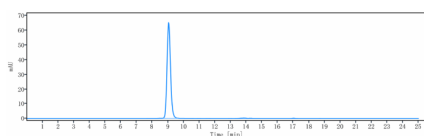
Protein Information

Name	SIGLEC8
Synonyms	SAF2
Function	Putative adhesion molecule that mediates sialic-acid dependent binding to blood cells (PubMed: 10625619 , PubMed: 10856141). Preferentially binds to alpha-2,3-linked sialic acid. Also binds to alpha-2,6-linked sialic acid. The sialic acid recognition site may be masked by cis interactions with sialic acids on the same cell surface (PubMed: 10625619). Recognizes simultaneously epitopes having a terminal N-acetylneuraminic acid (sialic acid) and an underlying 6-O-sulfated galactose. Preferentially binds to Gal-6-sulfated sialyl-Lewis X glycan epitopes (PubMed: 27357658).
Cellular Location	Membrane; Single-pass type I membrane protein.
Tissue Location	Expressed specifically on blood cells namely basophil, mast cells and eosinophils.

Images



Anti-Siglec-8 Reference Antibody (lirentelimab) on SDS-PAGE under reducing (R) condition. The gel was stained with Coomassie Blue. The purity of the protein is greater than 90%



The purity of Anti-Siglec-8 Reference Antibody (lirentelimab) is more than 95% ,determined by SEC-HPLC.

Please note: All products are 'FOR RESEARCH USE ONLY. NOT FOR USE IN DIAGNOSTIC OR THERAPEUTIC PROCEDURES'.