

Anti-GP6 / Glycoprotein-6 Reference Antibody (glenzocimab)

Recombinant Antibody
Catalog # APR10736

Product Information

Application	FC, Kinetics, Animal Model
Primary Accession	Q9HCN6
Reactivity	Human
Clonality	Monoclonal
Isotype	IgG1
Calculated MW	36866

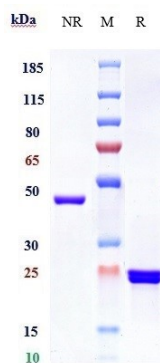
Additional Information

Target/Specificity	GP6 / Glycoprotein-6
Endotoxin Conjugation	Unconjugated
Expression system	CHO Cell
Format	Purified monoclonal antibody supplied in PBS, pH6.0, without preservative. This antibody is purified through a protein A column.

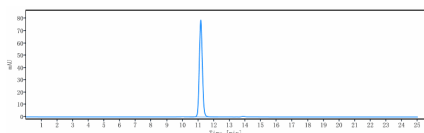
Protein Information

Name	GP6 (HGNC:14388)
Function	Collagen receptor involved in collagen-induced platelet adhesion and activation. Plays a key role in platelet procoagulant activity and subsequent thrombin and fibrin formation. This procoagulant function may contribute to arterial and venous thrombus formation. The signaling pathway involves the FcR gamma-chain, the Src kinases (likely FYN or LYN) and SYK, the adapter protein LAT and leads to the activation of PLCG2.
Cellular Location	[Isoform 1]: Cell membrane; Single-pass membrane protein
Tissue Location	Megakaryocytes and platelets.

Images



(glenzocimab) on SDS-PAGE under reducing (R) condition. The gel was stained with Coomassie Blue. The purity of the protein is greater than 90%



The purity of Anti-GP6 / Glycoprotein-6 Reference Antibody (glenzocimab) is more than 100% ,determined by SEC-HPLC.

Please note: All products are 'FOR RESEARCH USE ONLY. NOT FOR USE IN DIAGNOSTIC OR THERAPEUTIC PROCEDURES'.