

Anti-IL-18 Reference Antibody (ABT-325)

Recombinant Antibody
Catalog # APR10737

Product Information

Application	FC, Kinetics, Animal Model
Primary Accession	Q14116
Reactivity	Human
Clonality	Monoclonal
Isotype	IgG1
Calculated MW	22326

Additional Information

Target/Specificity	IL-18
Endotoxin Conjugation	Unconjugated
Expression system	CHO Cell
Format	Purified monoclonal antibody supplied in PBS, pH6.0, without preservative. This antibody is purified through a protein A column.

Protein Information

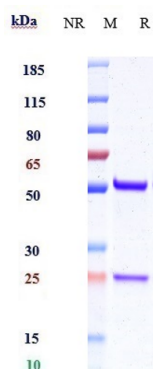
Name	IL18 (HGNC:5986)
Synonyms	IGIF, IL1F4
Function	Pro-inflammatory cytokine primarily involved in epithelial barrier repair, polarized T-helper 1 (Th1) cell and natural killer (NK) cell immune responses (PubMed: 10653850). Upon binding to IL18R1 and IL18RAP, forms a signaling ternary complex which activates NF-kappa-B, triggering synthesis of inflammatory mediators (PubMed: 14528293 , PubMed: 25500532 , PubMed: 37993714). Synergizes with IL12/interleukin-12 to induce IFNG synthesis from T-helper 1 (Th1) cells and natural killer (NK) cells (PubMed: 10653850). Involved in transduction of inflammation downstream of pyroptosis: its mature form is specifically released in the extracellular milieu by passing through the gasdermin-D (GSDMD) pore (PubMed: 33883744).
Cellular Location	Cytoplasm, cytosol. Secreted. Note=The precursor is cytosolic (PubMed: 33883744). In response to inflammasome-activating signals, cleaved and secreted (PubMed: 33883744 , PubMed: 37993712 , PubMed: 37993714). Mature form is secreted and released in the extracellular milieu by passing through the gasdermin-D (GSDMD) pore (PubMed: 33883744 , PubMed: 37993714). In contrast, the precursor form is not released, due to

the presence of an acidic region that is proteolytically removed by CASP1, CASP4 or CASP5 during maturation (PubMed:33883744, PubMed:37993714). The secretion is dependent on protein unfolding and facilitated by the cargo receptor TMED10 (PubMed:32272059).

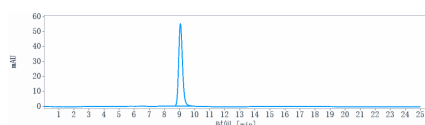
Tissue Location

[Isoform 2]: Expressed in ovarian carcinoma but undetectable in normal ovarian epithelial cells. Resistant to proteolytic activation by caspase-1 and -4

Images



Anti-IL-18 Reference Antibody (ABT-325) on SDS-PAGE under reducing (R) condition. The gel was stained with Coomassie Blue. The purity of the protein is greater than 95%



The purity of Anti-IL-18 Reference Antibody (ABT-325) is more than 95%, determined by SEC-HPLC.

Please note: All products are 'FOR RESEARCH USE ONLY. NOT FOR USE IN DIAGNOSTIC OR THERAPEUTIC PROCEDURES'.