

Anti-SEZ6 Reference Antibody (Abbv-011)

Recombinant Antibody
Catalog # APR10739

Product Information

Application	FC, Kinetics, Animal Model
Primary Accession	Q53EL9
Reactivity	Human
Clonality	Monoclonal
Isotype	IgG1
Calculated MW	107425

Additional Information

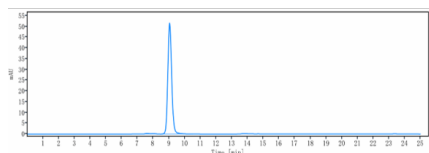
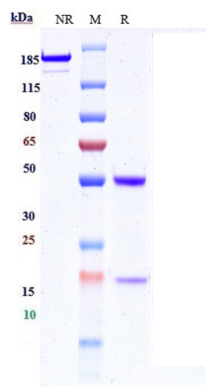
Target/Specificity	SEZ6
Endotoxin Conjugation	Unconjugated
Expression system	CHO Cell
Format	Purified monoclonal antibody supplied in PBS, pH6.0, without preservative. This antibody is purified through a protein A column.

Protein Information

Name	SEZ6
Function	May play a role in cell-cell recognition and in neuronal membrane signaling. Seems to be important for the achievement of the necessary balance between dendrite elongation and branching during the elaboration of a complex dendritic arbor. Involved in the development of appropriate excitatory synaptic connectivity (By similarity).
Cellular Location	Cell membrane; Single-pass type I membrane protein. Note=Localized on dendrites and in the synaptic and postsynaptic fraction.

Images

Anti-SEZ6 Reference Antibody (Abbv-011) on SDS-PAGE under reducing (R) condition. The gel was stained with Coomassie Blue. The purity of the protein is greater than 90%



The purity of Anti-SEZ6 Reference Antibody (Abbv-011) is more than 95% ,determined by SEC-HPLC.

Please note: All products are 'FOR RESEARCH USE ONLY. NOT FOR USE IN DIAGNOSTIC OR THERAPEUTIC PROCEDURES'.