

# Anti-Phosphatidylserine Reference Antibody (bavituximab)

Recombinant Antibody  
Catalog # APR10745

## Product Information

Application	FC, Kinetics, Animal Model
Primary Accession	<a href="#">Q9UG56</a>
Reactivity	Human, Mouse
Clonality	Monoclonal
Isotype	IgG1
Calculated MW	46672

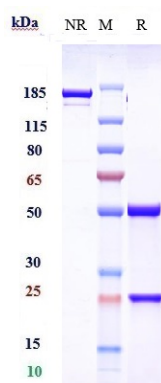
## Additional Information

Target/Specificity	Phosphatidylserine
Endotoxin Conjugation	Unconjugated
Expression system	CHO Cell
Format	Purified monoclonal antibody supplied in PBS, pH6.0, without preservative. This antibody is purified through a protein A column.

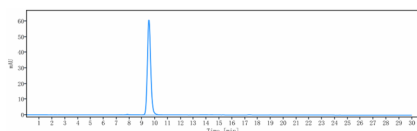
## Protein Information

Name	PISD {ECO:0000255   HAMAP-Rule:MF_03208}
Function	Catalyzes the formation of phosphatidylethanolamine (PtdEtn) from phosphatidylserine (PtdSer) (PubMed: <a href="#">30488656</a> , PubMed: <a href="#">30858161</a> ). Plays a central role in phospholipid metabolism and in the interorganelle trafficking of phosphatidylserine. May be involved in lipid droplet biogenesis at the endoplasmic reticulum membrane (By similarity).
Cellular Location	[Phosphatidylserine decarboxylase beta chain]: Mitochondrion inner membrane {ECO:0000255   HAMAP-Rule:MF_03208, ECO:0000305   PubMed:30858161, ECO:0000305   PubMed:33718843}; Single-pass membrane protein {ECO:0000255   HAMAP-Rule:MF_03208}; Intermembrane side {ECO:0000255   HAMAP-Rule:MF_03208} [Isoform 1]: Mitochondrion inner membrane

## Images



Anti-Phosphatidylserine Reference Antibody (bavituximab) on SDS-PAGE under reducing (R) condition. The gel was stained with Coomassie Blue. The purity of the protein is greater than 95%



The purity of Anti-Phosphatidylserine Reference Antibody (bavituximab) is more than 98.38% ,determined by SEC-HPLC.

Please note: All products are 'FOR RESEARCH USE ONLY. NOT FOR USE IN DIAGNOSTIC OR THERAPEUTIC PROCEDURES'.