

# Anti-VEGFB Reference Antibody (CSL346)

Recombinant Antibody  
Catalog # APR10748

## Product Information

---

<b>Application</b>	FC, Kinetics, Animal Model
<b>Primary Accession</b>	<a href="#">P49765</a>
<b>Reactivity</b>	Human
<b>Clonality</b>	Monoclonal
<b>Isotype</b>	IgG4SP
<b>Calculated MW</b>	21602

## Additional Information

---

<b>Target/Specificity</b>	VEGFB
<b>Endotoxin Conjugation</b>	Unconjugated
<b>Expression system</b>	CHO Cell
<b>Format</b>	Purified monoclonal antibody supplied in PBS, pH6.0, without preservative. This antibody is purified through a protein A column.

## Protein Information

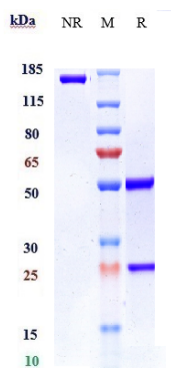
---

<b>Name</b>	VEGFB
<b>Synonyms</b>	VRF
<b>Function</b>	Growth factor for endothelial cells. VEGF-B167 binds heparin and neuropilin-1 whereas the binding to neuropilin-1 of VEGF-B186 is regulated by proteolysis.
<b>Cellular Location</b>	Secreted. Note=Secreted but remains associated to cells or to the extracellular matrix unless released by heparin
<b>Tissue Location</b>	Expressed in all tissues except liver. Highest levels found in heart, skeletal muscle and pancreas

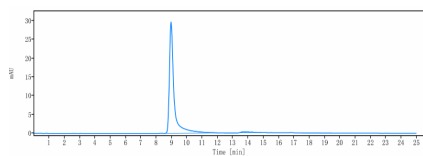
## Images

---

Anti-VEGFB Reference Antibody (CSL346) on SDS-PAGE under reducing (R) condition. The gel was stained with



Coomassie Blue. The purity of the protein is greater than 95%



The purity of Anti-VEGFB Reference Antibody (CSL346) is more than 98.5% ,determined by SEC-HPLC.

Please note: All products are 'FOR RESEARCH USE ONLY. NOT FOR USE IN DIAGNOSTIC OR THERAPEUTIC PROCEDURES'.