

Anti-CD19 Reference Antibody (coltuximab)

Recombinant Antibody

Catalog # APR10752

Product Information

Application	FC, Kinetics, Animal Model
Primary Accession	P15391
Reactivity	Human
Clonality	Monoclonal
Isotype	IgG1
Calculated MW	61128

Additional Information

Target/Specificity	CD19
Endotoxin	
Conjugation	Unconjugated
Expression system	CHO Cell
Format	Purified monoclonal antibody supplied in PBS, pH6.0, without preservative. This antibody is purified through a protein A column.

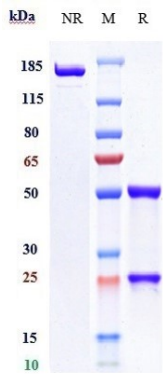
Protein Information

Name	CD19
Function	Functions as a coreceptor for the B-cell antigen receptor complex (BCR) on B-lymphocytes (PubMed: 29523808). Decreases the threshold for activation of downstream signaling pathways and for triggering B-cell responses to antigens (PubMed: 1373518 , PubMed: 16672701 , PubMed: 2463100). Activates signaling pathways that lead to the activation of phosphatidylinositol 3-kinase and the mobilization of intracellular Ca(2+) stores (PubMed: 12387743 , PubMed: 16672701 , PubMed: 9317126 , PubMed: 9382888). Is not required for early steps during B cell differentiation in the blood marrow (PubMed: 9317126). Required for normal differentiation of B-1 cells (By similarity). Required for normal B cell differentiation and proliferation in response to antigen challenges (PubMed: 1373518 , PubMed: 2463100). Required for normal levels of serum immunoglobulins, and for production of high-affinity antibodies in response to antigen challenge (PubMed: 12387743 , PubMed: 16672701 , PubMed: 9317126).
Cellular Location	Cell membrane; Single-pass type I membrane protein. Membrane raft {ECO:0000250 UniProtKB:P25918}; Single-pass type I membrane protein {ECO:0000250 UniProtKB:P25918}

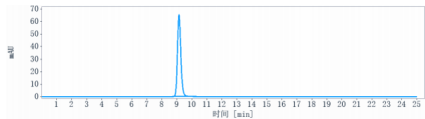
Tissue Location

Detected on marginal zone and germinal center B cells in lymph nodes (PubMed:2463100). Detected on blood B cells (at protein level) (PubMed:16672701, PubMed:2463100)

Images



Anti-CD19 Reference Antibody (coltuximab) on SDS-PAGE under reducing (R) condition. The gel was stained with Coomassie Blue. The purity of the protein is greater than 90%



The purity of Anti-CD19 Reference Antibody (coltuximab) is more than 95% ,determined by SEC-HPLC.

Please note: All products are 'FOR RESEARCH USE ONLY. NOT FOR USE IN DIAGNOSTIC OR THERAPEUTIC PROCEDURES'.