

Anti-MUC16 Reference Antibody (sofituzumab)

Recombinant Antibody

Catalog # APR10755

Product Information

Application	FC, Kinetics, Animal Model
Primary Accession	Q8WXI7
Reactivity	Human, Rat
Clonality	Monoclonal
Isotype	IgG1
Calculated MW	1519175

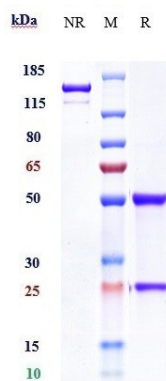
Additional Information

Target/Specificity	MUC16
Endotoxin	
Conjugation	Unconjugated
Expression system	CHO Cell
Format	Purified monoclonal antibody supplied in PBS, pH6.0, without preservative. This antibody is purified through a protein A column.

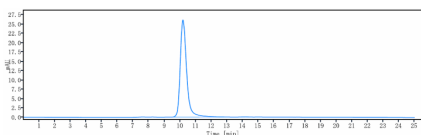
Protein Information

Name	MUC16 (HGNC:15582)
Function	Thought to provide a protective, lubricating barrier against particles and infectious agents at mucosal surfaces.
Cellular Location	Cell membrane; Single-pass type I membrane protein. Secreted, extracellular space. Note=May be liberated into the extracellular space following the phosphorylation of the intracellular C-terminus which induces the proteolytic cleavage and liberation of the extracellular domain
Tissue Location	Expressed in corneal and conjunctival epithelia (at protein level). Overexpressed in ovarian carcinomas and ovarian low malignant potential (LMP) tumors as compared to the expression in normal ovarian tissue and ovarian adenomas

Images



SDS-PAGE under reducing (R) condition. The gel was stained with Coomassie Blue. The purity of the protein is greater than 95%



The purity of Anti-MUC16 Reference Antibody (sofituzumab) is more than 100% ,determined by SEC-HPLC.

Please note: All products are 'FOR RESEARCH USE ONLY. NOT FOR USE IN DIAGNOSTIC OR THERAPEUTIC PROCEDURES'.