

Anti-STEAP1 Reference Antibody (vandortuzumAb)

Recombinant Antibody
Catalog # APR10758

Product Information

| | |
|--------------------------|----------------------------|
| Application | FC, Kinetics, Animal Model |
| Primary Accession | Q9UHE8 |
| Reactivity | Human |
| Clonality | Monoclonal |
| Isotype | IgG1 |
| Calculated MW | 39851 |

Additional Information

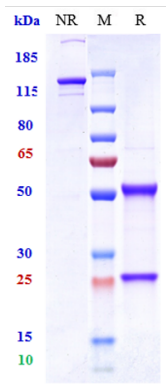
| | |
|----------------------------------|--|
| Target/Specificity | STEAP1 |
| Endotoxin Conjugation | Unconjugated |
| Expression system | CHO Cell |
| Format | Purified monoclonal antibody supplied in PBS, pH6.0, without preservative. This antibody is purified through a protein A column. |

Protein Information

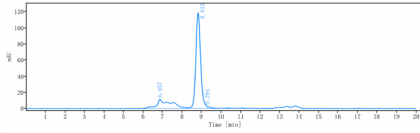
| | |
|--------------------------|---|
| Name | STEAP1 |
| Synonyms | PRSS24, STEAP |
| Function | Does not function as a metalloredutase due to the absence of binding sites for the electron-donating substrate NADPH. Promotes Fe(3+) reduction when fused to the NADPH-binding domain of STEAP4. |
| Cellular Location | Endosome membrane {ECO:0000250 UniProtKB:Q9CWR7}; Multi-pass membrane protein. Cell membrane; Multi-pass membrane protein |
| Tissue Location | Ubiquitously expressed. Highly expressed in prostate tumors. |

Images

Anti-STEAP1 Reference Antibody (vandortuzumAb) on SDS-PAGE under reducing (R) condition. The gel was stained with Coomassie Blue. The purity of the protein is



greater than 95%



The purity of Anti-STEAP1 Reference Antibody (vandortuzumAb) is more than 95% ,determined by SEC-HPLC.

Please note: All products are 'FOR RESEARCH USE ONLY. NOT FOR USE IN DIAGNOSTIC OR THERAPEUTIC PROCEDURES'.