

Anti-Syndecan-1 / CD138 Reference Antibody (indatuximab)

Recombinant Antibody
Catalog # APR10759

Product Information

Application	FC, Kinetics, Animal Model
Primary Accession	P18827
Reactivity	Human
Clonality	Monoclonal
Isotype	IgG4SP
Calculated MW	32462

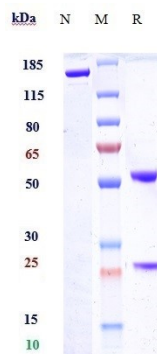
Additional Information

Target/Specificity	Syndecan-1 / CD138
Endotoxin Conjugation	Unconjugated
Expression system	CHO Cell
Format	Purified monoclonal antibody supplied in PBS, pH6.0, without preservative. This antibody is purified through a protein A column.

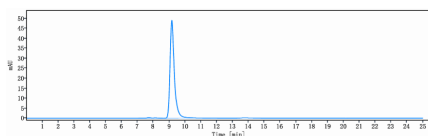
Protein Information

Name	SDC1 (HGNC:10658)
Synonyms	SDC
Function	Cell surface proteoglycan that contains both heparan sulfate and chondroitin sulfate and that links the cytoskeleton to the interstitial matrix (By similarity). Regulates exosome biogenesis in concert with SDCBP and PDGFR (PubMed: 22660413). Able to induce its own expression in dental mesenchymal cells and also in the neighboring dental epithelial cells via an MSX1-mediated pathway (By similarity).
Cellular Location	Membrane; Single-pass type I membrane protein. Secreted Secreted, extracellular exosome Note=Shedding of the ectodomain produces a soluble form
Tissue Location	Detected in placenta (at protein level) (PubMed:32337544). Detected in fibroblasts (at protein level) (PubMed:36213313).

Images



Anti-Syndecan-1 / CD138 Reference Antibody (indatuximab) on SDS-PAGE under reducing (R) condition. The gel was stained with Coomassie Blue. The purity of the protein is greater than 95%



The purity of Anti-Syndecan-1 / CD138 Reference Antibody (indatuximab) is more than 99% ,determined by SEC-HPLC.

Please note: All products are 'FOR RESEARCH USE ONLY. NOT FOR USE IN DIAGNOSTIC OR THERAPEUTIC PROCEDURES'.