

Anti-Abm Reference Antibody (IgG4+Kappa Isotype Control)

Recombinant Antibody
Catalog # APR10764

Product Information

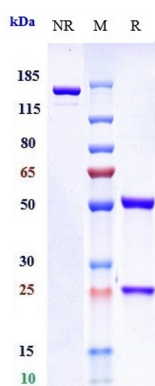
| | |
|--------------------------|----------------------------|
| Application | FC, Kinetics, Animal Model |
| Primary Accession | NA |
| Reactivity | Chicken |
| Clonality | Monoclonal |
| Isotype | IgG4 |
| Calculated MW | 150 kDa |

Additional Information

| | |
|----------------------------------|--|
| Target/Specificity | Abm |
| Endotoxin Conjugation | Unconjugated |
| Expression system | CHO Cell |
| Format | Purified monoclonal antibody supplied in PBS, pH6.0, without preservative. This antibody is purified through a protein A column. |

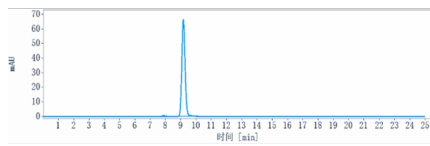
Protein Information

Images



Anti-Abm Reference Antibody (IgG4+Kappa Isotype Control) on SDS-PAGE under reducing (R) condition. The gel was stained with Coomassie Blue. The purity of the protein is greater than 90%

The purity of Anti-Abm Reference Antibody (IgG4+Kappa



Isotype Control) is more than 95% ,determined by SEC-HPLC.

Please note: All products are 'FOR RESEARCH USE ONLY. NOT FOR USE IN DIAGNOSTIC OR THERAPEUTIC PROCEDURES'.