

Anti-Amyloid Beta Reference Antibody (Kumamoto U. patent anti-Amyloid Beta)

Recombinant Antibody
Catalog # APR10776

Product Information

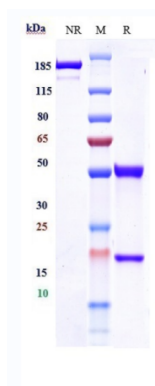
Application	FC, Kinetics, Animal Model
Primary Accession	P05067
Reactivity	Human
Clonality	Monoclonal
Isotype	IgG1
Calculated MW	150 KDa

Additional Information

Target/Specificity	Amyloid Beta
Endotoxin Conjugation	Unconjugated
Expression system	CHO Cell
Format	Purified monoclonal antibody supplied in PBS, pH6.0, without preservative. This antibody is purified through a protein A column.

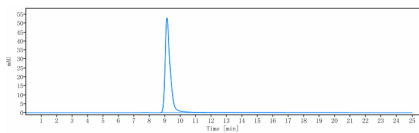
Protein Information

Images



Anti-Amyloid Beta Reference Antibody (Kumamoto U. patent anti-Amyloid Beta) on SDS-PAGE under reducing (R) condition. The gel was stained with Coomassie Blue. The purity of the protein is greater than 90%

The purity of Anti-Amyloid Beta Reference Antibody



(Kumamoto U. patent anti-Amyloid Beta) is more than 95% ,determined by SEC-HPLC.

Please note: All products are 'FOR RESEARCH USE ONLY. NOT FOR USE IN DIAGNOSTIC OR THERAPEUTIC PROCEDURES'.