

Anti-Bcl-2 Reference Antibody (U.Toronto patent anti-Bax)

Recombinant Antibody
Catalog # APR10792

Product Information

Application	FC, Kinetics, Animal Model
Primary Accession	Q07812
Reactivity	Human
Clonality	Monoclonal
Isotype	IgG1
Calculated MW	21184

Additional Information

Target/Specificity	Bcl-2
Endotoxin Conjugation	Unconjugated
Expression system	CHO Cell
Format	Purified monoclonal antibody supplied in PBS, pH6.0, without preservative. This antibody is purified through a protein A column.

Protein Information

Name	BAX
Synonyms	BCL2L4
Function	Plays a role in the mitochondrial apoptotic process (PubMed: 10772918 , PubMed: 11060313 , PubMed: 16113678 , PubMed: 16199525 , PubMed: 18948948 , PubMed: 21199865 , PubMed: 21458670 , PubMed: 25609812 , PubMed: 36361894 , PubMed: 8358790 , PubMed: 8521816). Under normal conditions, BAX is largely cytosolic via constant retrotranslocation from mitochondria to the cytosol mediated by BCL2L1/Bcl-xL, which avoids accumulation of toxic BAX levels at the mitochondrial outer membrane (MOM) (PubMed: 21458670). Under stress conditions, undergoes a conformation change that causes translocation to the mitochondrion membrane, leading to the release of cytochrome c that then triggers apoptosis (PubMed: 10772918 , PubMed: 11060313 , PubMed: 16113678 , PubMed: 16199525 , PubMed: 18948948 , PubMed: 21199865 , PubMed: 21458670 , PubMed: 25609812 , PubMed: 8358790 , PubMed: 8521816). Promotes activation of CASP3, and thereby apoptosis (PubMed: 10772918 , PubMed: 11060313 , PubMed: 16113678 ,

PubMed:[16199525](#), PubMed:[18948948](#), PubMed:[21199865](#),
PubMed:[21458670](#), PubMed:[25609812](#), PubMed:[8358790](#), PubMed:[8521816](#)).

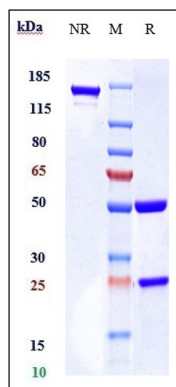
Cellular Location

[Isoform Alpha]: Mitochondrion outer membrane; Single-pass membrane protein. Cytoplasm. Nucleus Note=Colocalizes with 14-3-3 proteins in the cytoplasm. Under stress conditions, undergoes a conformation change that causes release from JNK-phosphorylated 14-3-3 proteins and translocation to the mitochondrion membrane. Upon Sendai virus infection, recruited to the mitochondrion through interaction with IRF3 (PubMed:25609812) [Isoform Gamma]: Cytoplasm.

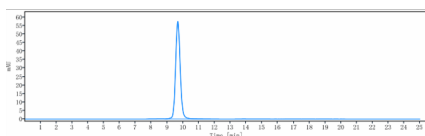
Tissue Location

Expressed in a wide variety of tissues. Isoform Psi is found in glial tumors. Isoform Alpha is expressed in spleen, breast, ovary, testis, colon and brain, and at low levels in skin and lung Isoform Sigma is expressed in spleen, breast, ovary, testis, lung, colon, brain and at low levels in skin. Isoform Alpha and isoform Sigma are expressed in pro-myelocytic leukemia, histiocytic lymphoma, Burkitt's lymphoma, T-cell lymphoma, lymphoblastic leukemia, breast adenocarcinoma, ovary adenocarcinoma, prostate carcinoma, prostate adenocarcinoma, lung carcinoma, epidermoid carcinoma, small cell lung carcinoma and colon adenocarcinoma cell lines

Images



Anti-Bcl-2 Reference Antibody (U.Toronto patent anti-Bax) on SDS-PAGE under reducing (R) condition. The gel was stained with Coomassie Blue. The purity of the protein is greater than 90%



The purity of Anti-Bcl-2 Reference Antibody (U.Toronto patent anti-Bax) is more than 95% ,determined by SEC-HPLC.

Please note: All products are 'FOR RESEARCH USE ONLY. NOT FOR USE IN DIAGNOSTIC OR THERAPEUTIC PROCEDURES'.