

# Anti-CD59 Reference Antibody ( Mellitus patent anti-CD59)

Recombinant Antibody  
Catalog # APR10813

## Product Information

---

Application	FC, Kinetics, Animal Model
Primary Accession	<a href="#">P13987</a>
Reactivity	Human
Clonality	Monoclonal
Isotype	IgG1
Calculated MW	14177

## Additional Information

---

Target/Specificity	CD59
Endotoxin Conjugation	Unconjugated
Expression system	CHO Cell
Format	Purified monoclonal antibody supplied in PBS, pH6.0, without preservative. This antibody is purified through a protein A column.

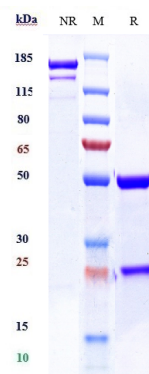
## Protein Information

---

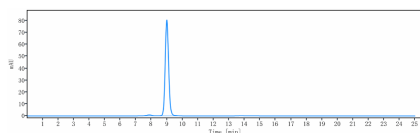
Name	CD59 {ECO:0000303   PubMed:2475570, ECO:0000312   HGNC:HGNC:1689}
Function	Potent inhibitor of the complement membrane attack complex (MAC) action, which protects human cells from damage during complement activation (PubMed: <a href="#">11882685</a> , PubMed: <a href="#">1698710</a> , PubMed: <a href="#">2475111</a> , PubMed: <a href="#">2475570</a> , PubMed: <a href="#">2606909</a> , PubMed: <a href="#">9053451</a> ). Acts by binding to the beta-haipins of C8 (C8A and C8B) components of the assembling MAC, forming an intermolecular beta-sheet that prevents incorporation of the multiple copies of C9 required for complete formation of the osmolytic pore (PubMed: <a href="#">11882685</a> , PubMed: <a href="#">1698710</a> , PubMed: <a href="#">36797260</a> ).
Cellular Location	Cell membrane; Lipid-anchor, GPI-anchor. Secreted. Note=Localizes to the cell surface (PubMed:36797260). Soluble form found in a number of tissues (PubMed:8670172).

## Images

---



Anti-CD59 Reference Antibody ( Mellitus patent anti-CD59) on SDS-PAGE under reducing (R) condition. The gel was stained with Coomassie Blue. The purity of the protein is greater than 90%



The purity of Anti-CD59 Reference Antibody ( Mellitus patent anti-CD59) is more than 95% ,determined by SEC-HPLC.

Please note: All products are 'FOR RESEARCH USE ONLY. NOT FOR USE IN DIAGNOSTIC OR THERAPEUTIC PROCEDURES'.