

Anti-CLDN6 Reference Antibody (AB1-11)

Recombinant Antibody

Catalog # APR10832

Product Information

Application	FC, Kinetics, Animal Model
Primary Accession	P56747
Reactivity	Human
Clonality	Monoclonal
Isotype	IgG1
Calculated MW	23292

Additional Information

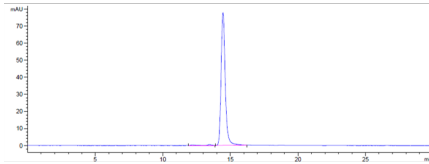
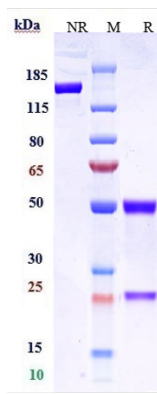
Target/Specificity	CLDN6
Endotoxin Conjugation	Unconjugated
Expression system	CHO Cell
Format	Purified monoclonal antibody supplied in PBS, pH6.0, without preservative. This antibody is purified through a protein A column.

Protein Information

Name	CLDN6
Function	Plays a major role in tight junction-specific obliteration of the intercellular space.
Cellular Location	Cell junction, tight junction {ECO:0000250 UniProtKB:Q9Z262}. Cell membrane; Multi-pass membrane protein
Tissue Location	Expressed in the liver, in peripheral blood mononuclear cells and hepatocarcinoma cell lines

Images

Anti-CLDN6 Reference Antibody (AB1-11) on SDS-PAGE under reducing (R) condition. The gel was stained with Coomassie Blue. The purity of the protein is greater than 95%



The purity of Anti-CLDN6 Reference Antibody (AB1-11) is more than 98.29% ,determined by SEC-HPLC.

Please note: All products are 'FOR RESEARCH USE ONLY. NOT FOR USE IN DIAGNOSTIC OR THERAPEUTIC PROCEDURES'.