

# Anti-Complement C5aR1 Reference Antibody (G2\_anti-C5aR)

Recombinant Antibody  
Catalog # APR10845

## Product Information

---

<b>Application</b>	FC, Kinetics, Animal Model
<b>Primary Accession</b>	<a href="#">P21730</a>
<b>Reactivity</b>	Human
<b>Clonality</b>	Monoclonal
<b>Isotype</b>	IgG4
<b>Calculated MW</b>	39336

## Additional Information

---

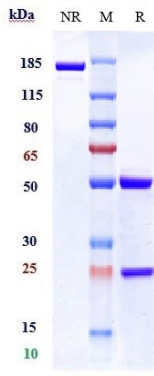
<b>Target/Specificity</b>	Complement C5aR1
<b>Endotoxin Conjugation</b>	Unconjugated
<b>Expression system</b>	CHO Cell
<b>Format</b>	Purified monoclonal antibody supplied in PBS, pH6.0, without preservative. This antibody is purified through a protein A column.

## Protein Information

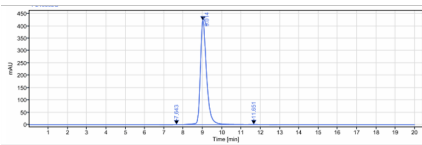
---

<b>Name</b>	C5AR1 {ECO:0000303   PubMed:37852260, ECO:0000312   HGNC:HGNC:1338}
<b>Function</b>	Receptor for the chemotactic and inflammatory peptide anaphylatoxin C5a, stimulating chemotaxis, granule enzyme release, intracellular calcium release and superoxide anion production (PubMed: <a href="#">10636859</a> , PubMed: <a href="#">15153520</a> , PubMed: <a href="#">1847994</a> , PubMed: <a href="#">29300009</a> , PubMed: <a href="#">36806352</a> , PubMed: <a href="#">7622471</a> , PubMed: <a href="#">8182049</a> , PubMed: <a href="#">9553099</a> ). Ligand binding causes a conformation change that triggers signaling via guanine nucleotide-binding proteins (G proteins) and modulates the activity of downstream effectors, such as adenylate cyclase (PubMed: <a href="#">36806352</a> , PubMed: <a href="#">37852260</a> ). C5AR1 is coupled to G(i)/G(o) (GNAI1 or GNAO1) G alpha proteins and mediates inhibition of adenylate cyclase (PubMed: <a href="#">36806352</a> , PubMed: <a href="#">37852260</a> ). The ligand interacts with at least two sites on the receptor: a high-affinity site on the extracellular N-terminus, and a second site in the transmembrane region which activates downstream signaling events (PubMed: <a href="#">7622471</a> , PubMed: <a href="#">8182049</a> , PubMed: <a href="#">9553099</a> ).
<b>Cellular Location</b>	Cell membrane; Multi-pass membrane protein. Cytoplasmic vesicle. Note=Phosphorylated C5aR colocalizes with ARRB1 and ARRB2 in cytoplasmic

## Images



Anti-Complement C5aR1 Reference Antibody (G2\_anti-C5aR) on SDS-PAGE under reducing (R) condition. The gel was stained with Coomassie Blue. The purity of the protein is greater than 90%



The purity of Anti-Complement C5aR1 Reference Antibody (G2\_anti-C5aR) is more than 95% ,determined by SEC-HPLC.

Please note: All products are 'FOR RESEARCH USE ONLY. NOT FOR USE IN DIAGNOSTIC OR THERAPEUTIC PROCEDURES'.