

Anti-Complement Factor B Reference Antibody (Genentech patent anti-Factor B)

Recombinant Antibody
Catalog # APR10846

Product Information

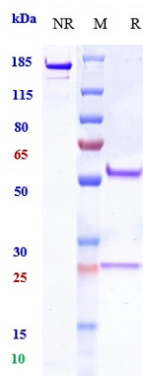
Application	FC, Kinetics, Animal Model
Primary Accession	P00751
Reactivity	Human, Mouse
Clonality	Monoclonal
Isotype	IgG1
Calculated MW	85533

Additional Information

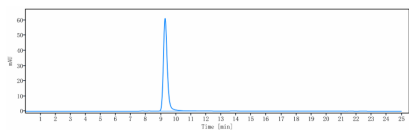
Target/Specificity	Complement Factor B
Endotoxin Conjugation	Unconjugated
Expression system	CHO Cell
Format	Purified monoclonal antibody supplied in PBS, pH6.0, without preservative. This antibody is purified through a protein A column.

Protein Information

Name	CFB (HGNC:1037)
Synonyms	BF, BFD
Function	<p>Precursor of the catalytic component of the C3 and C5 convertase complexes of the alternative pathway of the complement system, a cascade of proteins that leads to phagocytosis and breakdown of pathogens and signaling that strengthens the adaptive immune system (PubMed:3638964, PubMed:624565, PubMed:6554279, PubMed:6919543, PubMed:9748277). The alternative complement pathway acts as an amplification loop that enhances other complement pathways (classical, lectin and GZMK) by promoting formation of additional C3 and C5 convertases (PubMed:3638964, PubMed:624565, PubMed:6554279, PubMed:6919543, PubMed:9748277). CFB is cleaved and activated by CFD to generate Ba and Bb chains; Bb chain constituting the catalytic component of the C3 and C5 convertases (PubMed:6769474, PubMed:9748277).</p>
Cellular Location	Secreted.



Anti-Complement Factor B Reference Antibody (Genentech patent anti-Factor B) on SDS-PAGE under reducing (R) condition. The gel was stained with Coomassie Blue. The purity of the protein is greater than 90%



The purity of Anti-Complement Factor B Reference Antibody (Genentech patent anti-Factor B) is more than 95% ,determined by SEC-HPLC.

Please note: All products are 'FOR RESEARCH USE ONLY. NOT FOR USE IN DIAGNOSTIC OR THERAPEUTIC PROCEDURES'.