

# Anti-CSF2 / GM-CSF Reference Antibody (Theraclone patent anti-GM-CSF)

Recombinant Antibody

Catalog # APR10856

## Product Information

---

<b>Application</b>	FC, Kinetics, Animal Model
<b>Primary Accession</b>	<a href="#">P04141</a>
<b>Reactivity</b>	Human, Rabbit
<b>Clonality</b>	Monoclonal
<b>Isotype</b>	IgG1
<b>Calculated MW</b>	16295

## Additional Information

---

<b>Target/Specificity</b>	CSF2 / GM-CSF
<b>Endotoxin Conjugation</b>	Unconjugated
<b>Expression system</b>	CHO Cell
<b>Format</b>	Purified monoclonal antibody supplied in PBS, pH6.0, without preservative. This antibody is purified through a protein A column.

## Protein Information

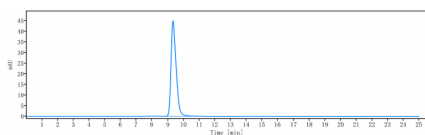
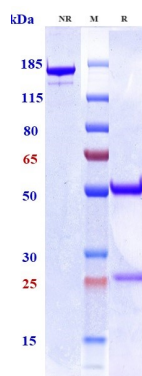
---

<b>Name</b>	CSF2
<b>Synonyms</b>	GMCSF
<b>Function</b>	Cytokine that stimulates the growth and differentiation of hematopoietic precursor cells from various lineages, including granulocytes, macrophages, eosinophils and erythrocytes.
<b>Cellular Location</b>	Secreted

## Images

---

Anti-CSF2 / GM-CSF Reference Antibody (Theraclone patent anti-GM-CSF) on SDS-PAGE under reducing (R) condition. The gel was stained with Coomassie Blue. The purity of the protein is greater than 95%



The purity of Anti-CSF2 / GM-CSF Reference Antibody (Theraclone patent anti-GM-CSF) is more than 95% ,determined by SEC-HPLC.

Please note: All products are 'FOR RESEARCH USE ONLY. NOT FOR USE IN DIAGNOSTIC OR THERAPEUTIC PROCEDURES'.