

# Anti-CSF3R / G-CSFR Reference Antibody (CSL patent anti-G-CSFR)

Recombinant Antibody  
Catalog # APR10858

## Product Information

---

<b>Application</b>	FC, Animal Model, Kinetics
<b>Primary Accession</b>	<a href="#">Q99062</a>
<b>Reactivity</b>	Human
<b>Clonality</b>	Monoclonal
<b>Isotype</b>	IgG4
<b>Calculated MW</b>	92156

## Additional Information

---

<b>Target/Specificity</b>	CSF3R / G-CSFR
<b>Endotoxin Conjugation</b>	Unconjugated
<b>Expression system</b>	CHO Cell
<b>Format</b>	Purified monoclonal antibody supplied in PBS, pH6.0, without preservative. This antibody is purified through a protein A column.

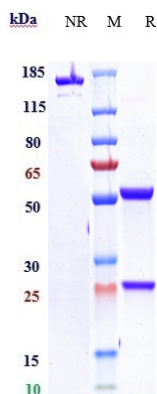
## Protein Information

---

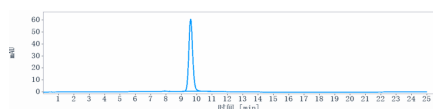
<b>Name</b>	CSF3R
<b>Synonyms</b>	GCSFR
<b>Function</b>	Receptor for granulocyte colony-stimulating factor (CSF3), essential for granulocytic maturation. Plays a crucial role in the proliferation, differentiation and survival of cells along the neutrophilic lineage. In addition it may function in some adhesion or recognition events at the cell surface.
<b>Cellular Location</b>	[Isoform 2]: Secreted.
<b>Tissue Location</b>	One or several isoforms have been found in myelogenous leukemia cell line KG-1, leukemia U-937 cell line, in bone marrow cells, placenta, and peripheral blood granulocytes. Isoform GCSFR-2 is found only in leukemia U-937 cells. Isoform GCSFR-3 is highly expressed in placenta

## Images

---



Anti-CSF3R / G-CSFR Reference Antibody (CSL patent anti-G-CSFR) on SDS-PAGE under reducing (R) condition. The gel was stained with Coomassie Blue. The purity of the protein is greater than 90%



The purity of Anti-CSF3R / G-CSFR Reference Antibody (CSL patent anti-G-CSFR) is more than 95% ,determined by SEC-HPLC.

Please note: All products are 'FOR RESEARCH USE ONLY. NOT FOR USE IN DIAGNOSTIC OR THERAPEUTIC PROCEDURES'.