

Anti-CTSS / Cathepsin S Reference Antibody (Fsn0503h)

Recombinant Antibody

Catalog # APR10867

Product Information

Application	FC, Kinetics, Animal Model
Primary Accession	P25774
Reactivity	Human, Cat
Clonality	Monoclonal
Isotype	IgG1
Calculated MW	37496

Additional Information

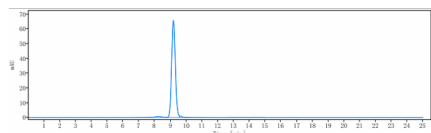
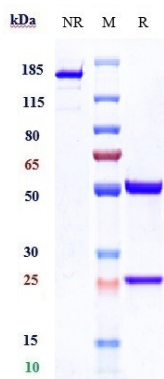
Target/Specificity	CTSS / Cathepsin S
Endotoxin	
Conjugation	Unconjugated
Expression system	CHO Cell
Format	Purified monoclonal antibody supplied in PBS, pH6.0, without preservative. This antibody is purified through a protein A column.

Protein Information

Name	CTSS
Function	Thiol protease. Key protease responsible for the removal of the invariant chain from MHC class II molecules and MHC class II antigen presentation (PubMed: 30612035). The bond-specificity of this proteinase is in part similar to the specificities of cathepsin L.
Cellular Location	Lysosome. Secreted. Cytoplasmic vesicle, phagosome

Images

Anti-CTSS / Cathepsin S Reference Antibody (Fsn0503h) on SDS-PAGE under reducing (R) condition. The gel was stained with Coomassie Blue. The purity of the protein is greater than 90%



The purity of Anti-CTSS / Cathepsin S Reference Antibody (Fsn0503h) is more than 95% ,determined by SEC-HPLC.

Please note: All products are 'FOR RESEARCH USE ONLY. NOT FOR USE IN DIAGNOSTIC OR THERAPEUTIC PROCEDURES'.