

Anti-CX3CL1 / Fractalkine Reference Antibody (quetmolimab)

Recombinant Antibody
Catalog # APR10868

Product Information

Application	FC, Kinetics, Animal Model
Primary Accession	P78423
Reactivity	Human
Clonality	Monoclonal
Isotype	IgG2SA
Calculated MW	42203

Additional Information

Target/Specificity	CX3CL1 / Fractalkine
Endotoxin Conjugation	Unconjugated
Expression system	CHO Cell
Format	Purified monoclonal antibody supplied in PBS, pH6.0, without preservative. This antibody is purified through a protein A column.

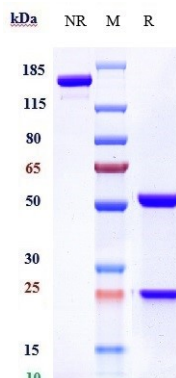
Protein Information

Name	CX3CL1 {ECO:0000303 PubMed:9024663}
Function	Chemokine that acts as a ligand for both CX3CR1 and integrins ITGAV:ITGB3 and ITGA4:ITGB1 (PubMed: 12055230 , PubMed: 21829356 , PubMed: 23125415 , PubMed: 9782118 , PubMed: 9931005). The CX3CR1-CX3CL1 signaling exerts distinct functions in different tissue compartments, such as immune response, inflammation, cell adhesion and chemotaxis (PubMed: 12055230 , PubMed: 9024663 , PubMed: 9177350 , PubMed: 9782118). Regulates leukocyte adhesion and migration processes at the endothelium (PubMed: 9024663 , PubMed: 9177350). Can activate integrins in both a CX3CR1-dependent and CX3CR1-independent manner (PubMed: 23125415 , PubMed: 24789099). In the presence of CX3CR1, activates integrins by binding to the classical ligand-binding site (site 1) in integrins (PubMed: 23125415 , PubMed: 24789099). In the absence of CX3CR1, binds to a second site (site 2) in integrins which is distinct from site 1 and enhances the binding of other integrin ligands to site 1 (PubMed: 23125415 , PubMed: 24789099).
Cellular Location	Cell membrane; Single-pass type I membrane protein

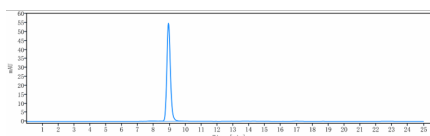
Tissue Location

Expressed in the seminal plasma, endometrial fluid and follicular fluid (at protein level). Small intestine, colon, testis, prostate, heart, brain, lung, skeletal muscle, kidney and pancreas. Most abundant in the brain and heart

Images



Anti-CX3CL1 / Fractalkine Reference Antibody (quetmolimab) on SDS-PAGE under reducing (R) condition. The gel was stained with Coomassie Blue. The purity of the protein is greater than 95%



The purity of Anti-CX3CL1 / Fractalkine Reference Antibody (quetmolimab) is more than 98.99%, determined by SEC-HPLC.

Please note: All products are 'FOR RESEARCH USE ONLY. NOT FOR USE IN DIAGNOSTIC OR THERAPEUTIC PROCEDURES'.