

Anti-DC-SIGN / CD209 Reference Antibody (INSERM patent anti-DC-SIGN)

Recombinant Antibody
Catalog # APR10878

Product Information

Application	FC, Kinetics, Animal Model
Primary Accession	Q9NNX6
Reactivity	Human
Clonality	Monoclonal
Isotype	IgG1
Calculated MW	45775

Additional Information

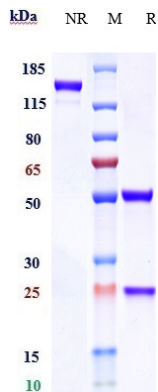
Target/Specificity	DC-SIGN / CD209
Endotoxin Conjugation	Unconjugated
Expression system	CHO Cell
Format	Purified monoclonal antibody supplied in PBS, pH6.0, without preservative. This antibody is purified through a protein A column.

Protein Information

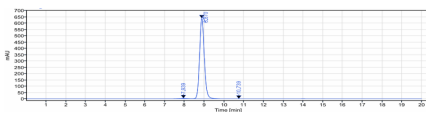
Name	CD209
Synonyms	CLEC4L
Function	Pathogen-recognition receptor expressed on the surface of immature dendritic cells (DCs) and involved in initiation of primary immune response. Thought to mediate the endocytosis of pathogens which are subsequently degraded in lysosomal compartments. The receptor returns to the cell membrane surface and the pathogen-derived antigens are presented to resting T-cells via MHC class II proteins to initiate the adaptive immune response.
Cellular Location	[Isoform 1]: Cell membrane; Single- pass type II membrane protein [Isoform 3]: Cell membrane; Single- pass type II membrane protein [Isoform 5]: Cell membrane; Single- pass type II membrane protein [Isoform 7]: Secreted. [Isoform 9]: Secreted. [Isoform 11]: Secreted.
Tissue Location	Predominantly expressed in dendritic cells and in DC-residing tissues. Also found in placental macrophages, endothelial cells of placental vascular

channels, peripheral blood mononuclear cells, and THP-1 monocytes.

Images



Anti-DC-SIGN / CD209 Reference Antibody (INSERM patent anti-DC-SIGN) on SDS-PAGE under reducing (R) condition. The gel was stained with Coomassie Blue. The purity of the protein is greater than 90%



The purity of Anti-DC-SIGN / CD209 Reference Antibody (INSERM patent anti-DC-SIGN) is more than 95% ,determined by SEC-HPLC.

Please note: All products are 'FOR RESEARCH USE ONLY. NOT FOR USE IN DIAGNOSTIC OR THERAPEUTIC PROCEDURES'.